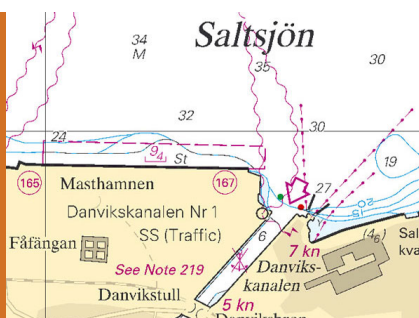


Notices to Mariners, SWEDEN Swedish Maritime Administration



Areas in Swedish Notices to Mariners



SJÖFARTSVERKET

Editorial office
Swedish Maritime Administration
Ufs
601 78 NORRKÖPING
Sweden
tel: 0771 630 605
e-mail: ufs@sjofartsverket.se
Publisher:
Hydrographer Patrik Wiberg

ANNOUNCEMENTS

No Announcements in this booklet.

NOTICES

Bay of Bothnia

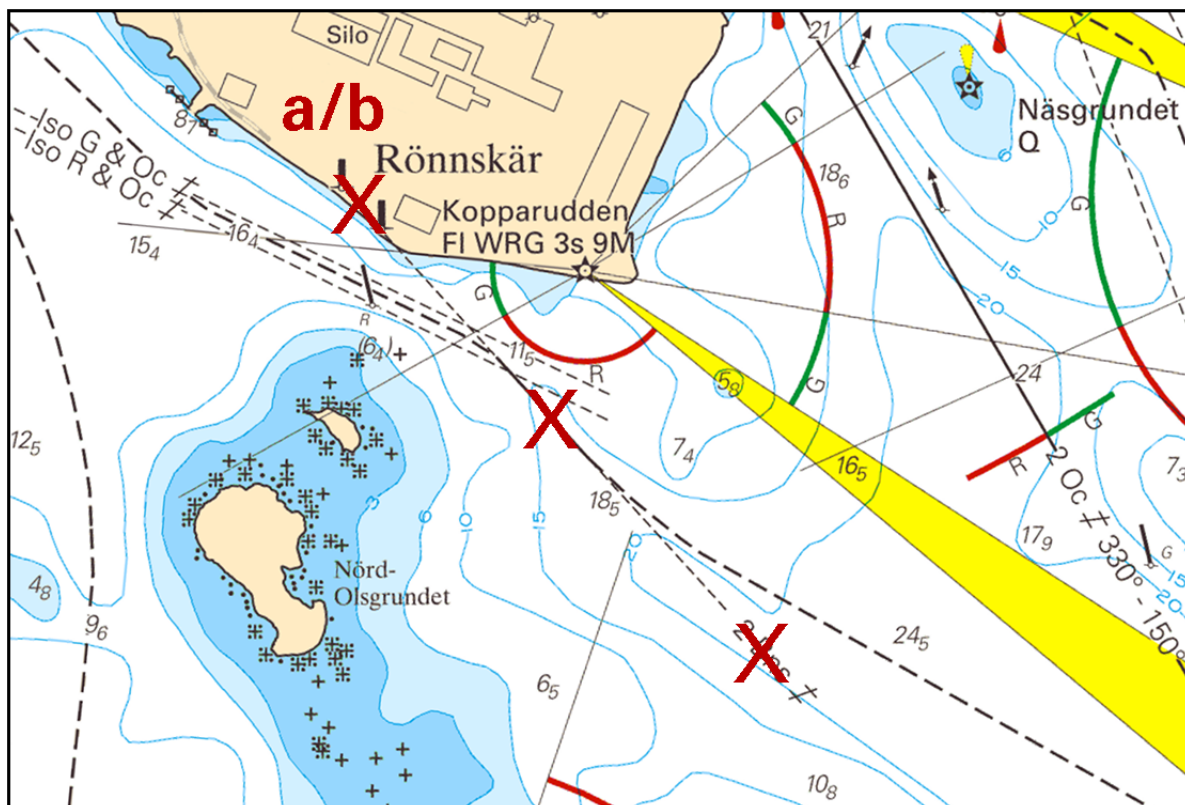
* 12435

Chart: 421, 4211

Sweden. Bay of Bothnia. Skelleftehamn. Rönnskär. Leading line removed.

Delete	beacons at a) and b) with leading line and text '2 Bns'	a)	64-39,807N	021-16,193E
		b)	64-39,761N	021-16,296E

Bsp Bottenviken 2014/s43, s64, s65, s67



Leading line removed at Rönnskär

Skellefteå Hamn. Publ. 4 oktober 2017

Northern Baltic

* 12494

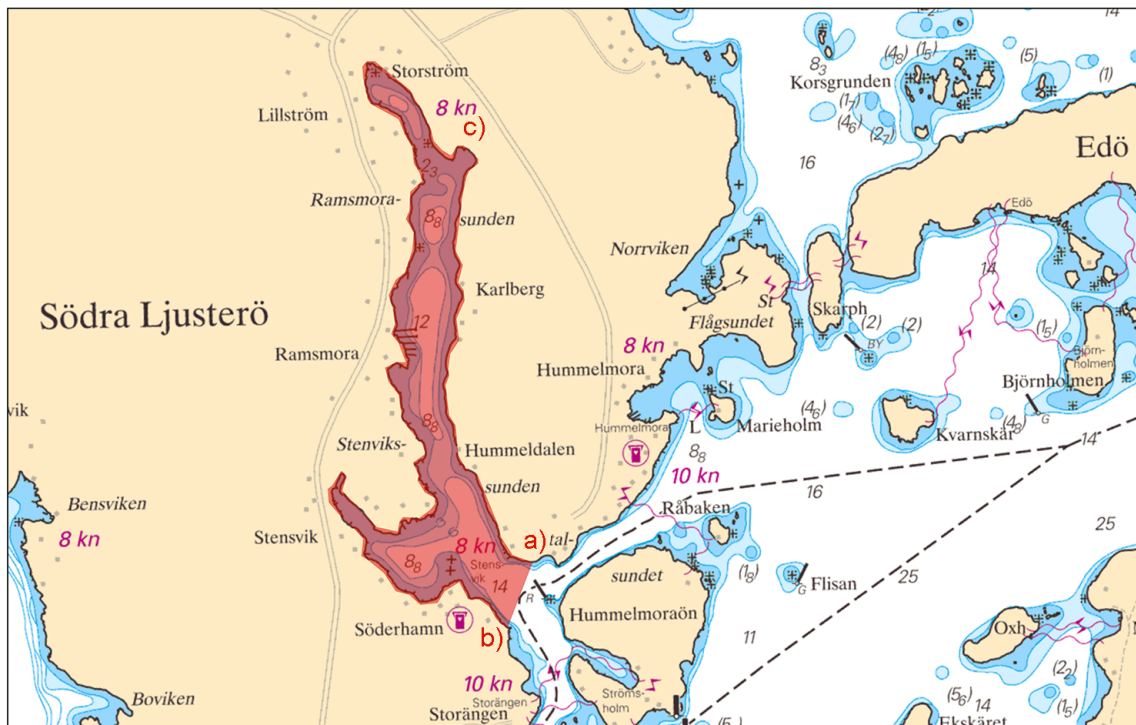
Chart: 612

Sweden. Northern Baltic. Stockholm archipelago. Södra Ljusterö. Ramsmorasunden. Ramsmoraviken. Speed limit 8 knots.

Speed limit 8 knots in Ramsmoraviken north of a line between positions a) - b).

		a)	59-26,98N	018-35,13E
		b)	59-26,80N	018-34,97E
Insert	text "8 kn"	c)	59-28,30N	018-34,70E

Bsp Stockholm N 2016/s39



Speed limit 8 knots

Länsstyrelsen Stockholm. Publ. 5 oktober 2017

* 12501 (T)

Chart: 6141, 6142

Sweden. Northern Baltic. Stockholm. Strömmen. Dredging works.

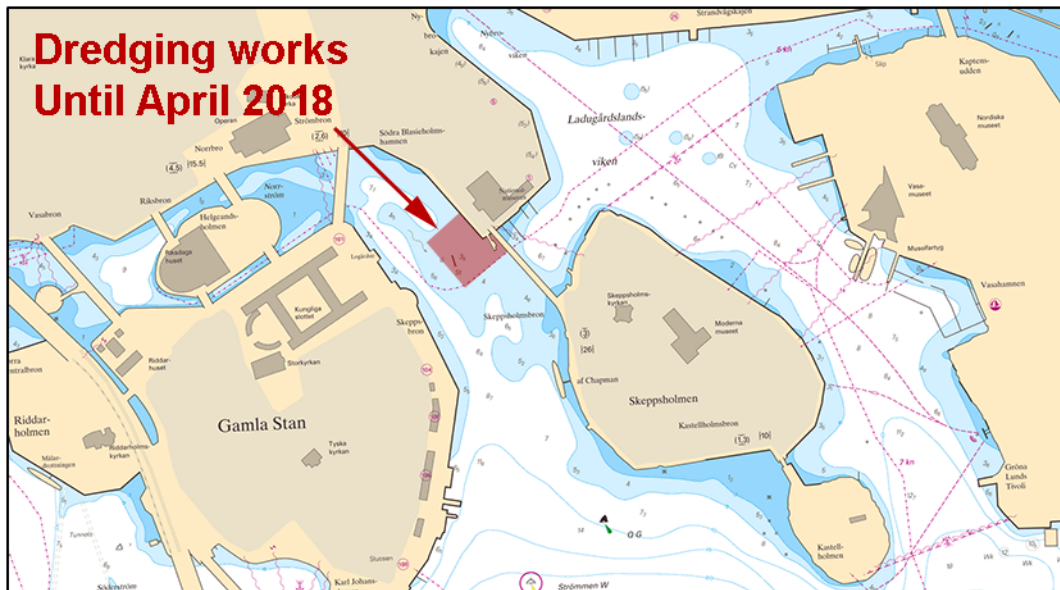
Time: Until April 2018

Dredging works are currently in progress at Strömkajen in Stockholm. The area will be marked with light spar buoys. Mariners are requested to pass the area with caution.

Work area	59-19,692N	018-04,628E
	59-19,665N	018-04,554E
	59-19,617N	018-04,625E
	59-19,644N	018-04,700E

Not shown in ENC.

Bsp Mälaren - Hjälmarén 2016/s52, Bsp Stockholm M 2016/s06, s10



Dredging operation in Stockholm

Stockholms hamnar. Publ. 4 oktober 2017

* 12514

Chart: 6141, 6142

Sweden. Northern Baltic. Stockholm. Gröna lund. Geotechnical drilling postponed.

Expired notices: 2017:670/12466(T)

The geotechnical drillings planned at Gröna Lund in Stockholm are postponed until further notice.

Gröna Lunds Tivoli	59-19,41N	018-05,68E
--------------------	-----------	------------

Not shown in ENC.

Bsp Mälaren - Hjälmarén 2016/s52, Bsp Stockholm M 2016/s06, s10

WSP Publ. 5 oktober 2017

Lake Mälaren and Södertälje kanal

* 12500 (T)

Chart: 10, 113

Sweden. Lake Mälaren and Södertälje kanal. S of Västerås. Fulleröfjärden. Light 'Stora Sandskär'. Sectors unreliable.

Time: Until further notice

The light 'Stora Sandskär' has unreliable sectors. The sectors shall not be used for navigation.

Light 'St. Sandskär'	59-31,78N	016-35,37E
----------------------	-----------	------------

Adm. LoL: C6689-4

Bsp Mälaren - Hjälmarén 2016/s05, s21

Sjöfartsverket, Norrköping. Publ. 30 september 2017

Central Baltic

* 12350 (T)

Chart: 623

Sweden. Central Baltic. N of Västervik. Lilla Rätö. Gudingen. Work with cables.

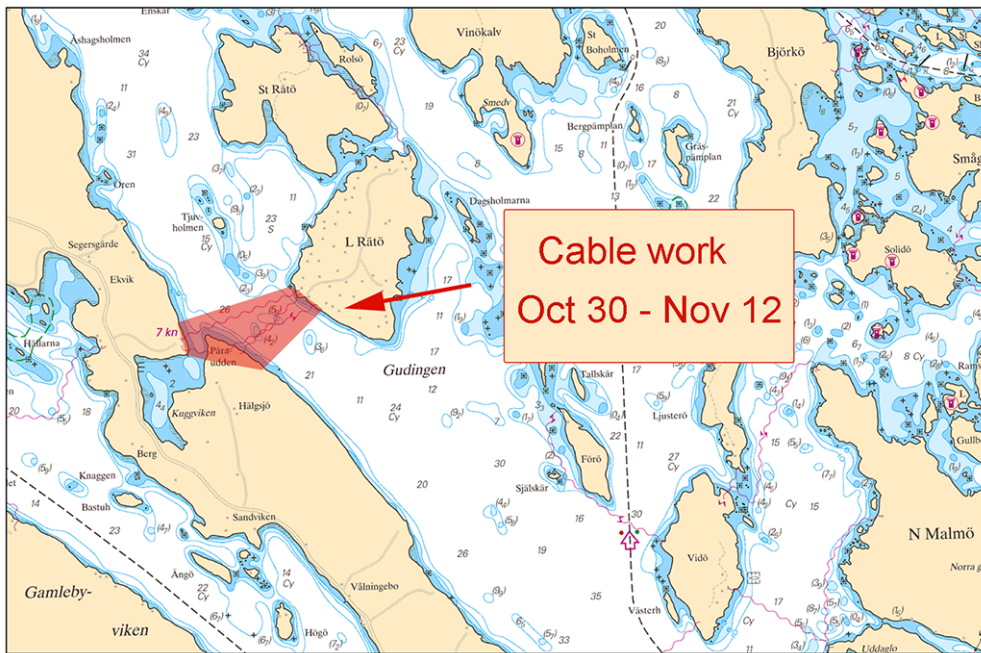
Time: October 30 - November 12

Work with existing cables will be conducted from a barge in the area between Lilla Rätö and the mainland. In case that the new position of any cable will differ from the charted position, this will be notified with a new Notice to Mariners.

Lilla Rätö	57-50,75N	016-34,30E
------------	-----------	------------

Not shown in ENC.

Bsp Ostkusten 2015/s49



Cable works, Lilla Rätö

ATS Kraftservice AB. Publ. 5 oktober 2017

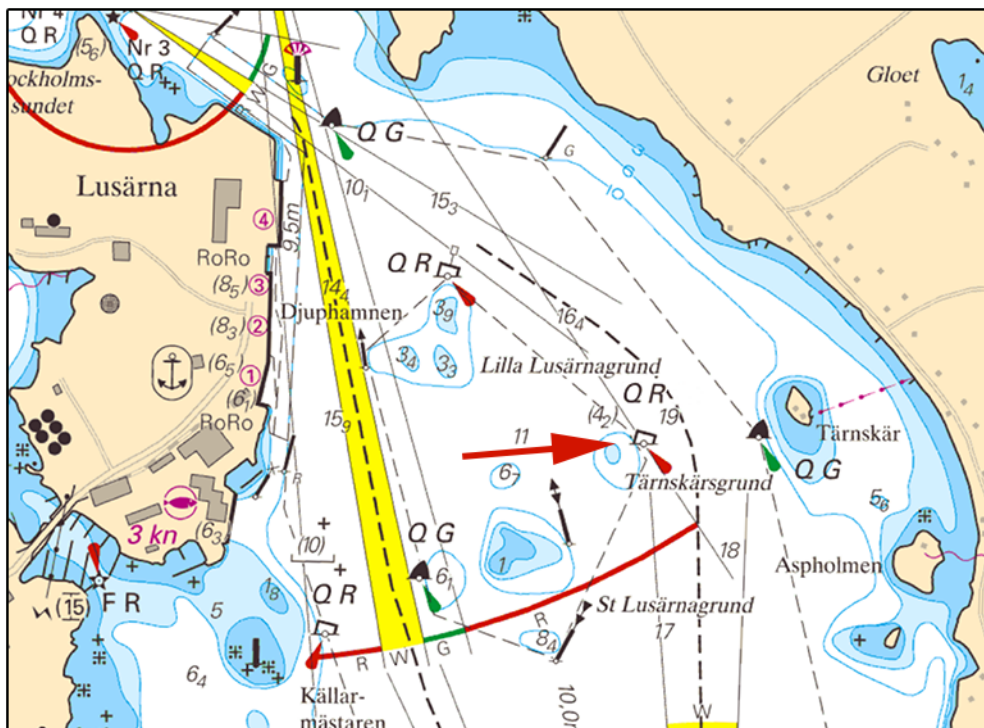
* 12488

Chart: 623, 6231

Sweden. Central Baltic. Västervik. Lusärnafjärden. Tärnskärgrund. Buoyage.

Amend	light character of port hand light buoy "Tärnskärgrund" to Q R	a)	57-44,92N	016-41,44E
-------	--	----	-----------	------------

Bsp Kalmarsund 2014/s30, Bsp Ostkusten 2015/s52, s54



Tärnskärgrund

Sjöfartsverket, Norrköping. Publ. 5 oktober 2017

Southern Baltic

* 12498

Chart: 742, 743

Sweden. Southern Baltic. Port of Åhus. Maximum authorized draft changed.

Expired notices: 2017:670/12451

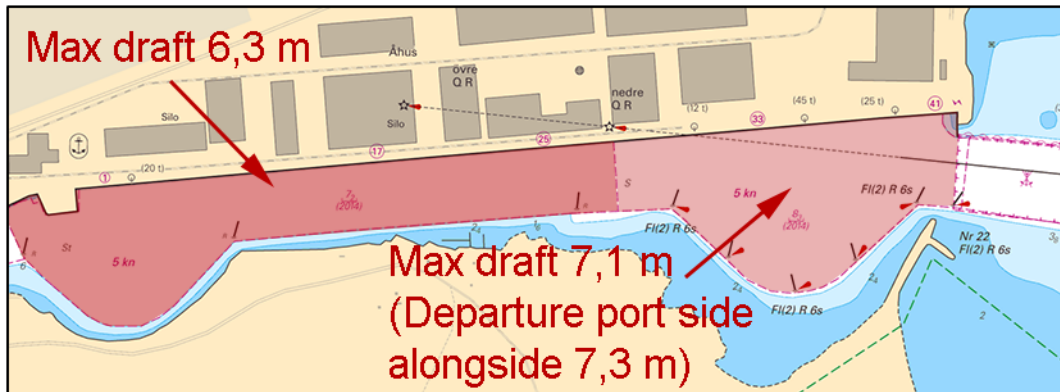
A hydrographic survey has indicated that reduction of maximum draft is necessary.

Maximum draft at berth 1 - 28 is reduced from 6,5 m to 6,3 m

Maximum draft at berth 28 - 41 is reduced from 7,5 m to 7,1 m. When departing with port side alongside 7,3 m is allowed.

Port of Åhus	55-55,65N	014-19,07E
--------------	-----------	------------

Bsp Hanöbukten 2014/s24, s54



Port of Åhus

Sjöfartsverket, Kalmar. Publ. 4 oktober 2017

Kattegat

* 12511 (T)

Chart: 92, 923, 924

Sweden. Kattegat. W of Halmstad. Ringenäs. Firing exercise. October 16 - 17, 2017.

Position: Approx.	56-40,8N	012-38,6E	Firing restriction area R41 A RINGENÄS
-------------------	----------	-----------	--

Firing will take place at Ringenäs firing range during stated times. The dangerous area extending from shore according to table below. A light on shore, VQ R, will be shown during firing.

Part of restriction area R41A will be closed for vessels during stated times. During practice, light VQ R is shown from shore.

For further information call +46 35 266 39 55, +46 35 536 77.

October	Time	Range
16	1230 - 1600	1,7 M
17	0900 - 1600	1,7 M

Not shown in ENC.

Bsp Västkusten S 2016/s29, s30

Försvarmakten, Lv6. Publ. 5 oktober 2017