

Notices to Mariners, SWEDEN Swedish Maritime Administration



Areas in Swedish Notices to Mariners



SJÖFARTSVERKET

Editorial office
Swedish Maritime Administration
Ufs
601 78 NORRKÖPING
Sweden
tel: 0771 630 605
e-mail: ufs@sjofartsverket.se
Publisher:
Hydrographer Patrik Wiberg

ANNOUNCEMENTS

* 12419

Chart: 9313

Printing of chart. New edition of chart 9312.

A new printing of the following nautical chart is available from September 2017:

Chart	Edition
9312	12.0 NEW EDITION

A NEW EDITION is a printing of an existing chart, containing changes significant to navigation which not have been fully described in the Swedish NtM.

Sjöfartsverket, Norrköping. Publ. 2 september 2017

* 12427 (T)

Chart: 6, 7, 71, 74, 8, 83

Naval exercise NORTHERN COASTS 2017.

TIME: SEPTEMBER 8 - 22, 2017

MILITARY EXERCISE 'NORTHERN COASTS 2017' (NOCO) IS IN PROGRESS DURING STATED TIME.

A LARGE NUMBER OF AIR-, SURFACE- AND UNDERWATER UNITS ARE PARTICIPATING.

'NAVAL COOPERATION AND GUIDANCE FOR SHIPPING' (NCAGS) WILL BE EXERCISED. ONE SCOPE IS TO EXERCISE ESTABLISHING OF SAFE ROUTES FOR MERCHANT SHIPS AND TO COMMUNICATE WITH AND ESCORT MERCHANT SHIPS.

SHIPS ARE REQUESTED TO KEEP CLEAR OF MILITARY SHIPS AND TO PAY ATTENTION TO SIGNALS.

MERCHANT SHIPS WILLING TO PARTICIPATE IN SOME WAY ARE ENCOURAGED TO CALL +4645586647 OR EMAIL NCAGS(AT)WIPS.MIL.SE. PARTICIPATING WILL NOT CAUSE ANY DELAY OR DEVIATION TO MERCHANT SHIPS.

Bsp Hanöbukten 2014/s05, s06, s07, Bsp Kalmarsund 2014/s04, s05, Bsp Sydkusten 2012/s06, s07

Försvarmakten, Karlskrona. Publ. 7 september 2017

NOTICES

Bay of Bothnia

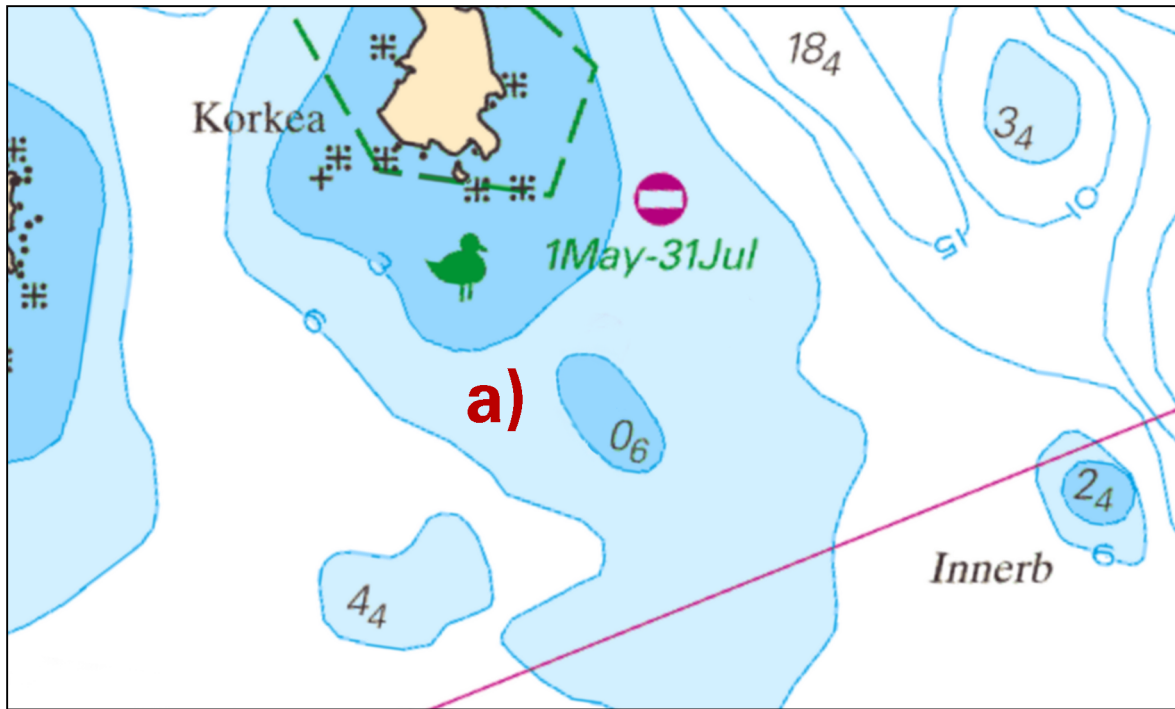
* 12383

Chart: 411

Sweden. Bay of Bothnia. SSW of Haparanda. E of Sandskär. SE of Korkea. Shoal.

Amend	3 m depth contour as shown	a)	65-34,347N	023-49,670E
-------	----------------------------	----	------------	-------------

Bsp Bottenviken 2014/s12



Korkea, E of Sandskär

Sjöfartsverket, Norrköping. Publ. 2 september 2017

* 12414 (T)

Chart: 41, 421

Sweden. Bay of Bothnia. E of Byske. Tåme. Gunnery exercises September 19 - 24, 2017.

Position: Approx.	64-55N	021-30E	Tåme Firing practice area
-------------------	--------	---------	---------------------------

Gunnery exercises will be carried out at Tåme Firing range during times listed below. During these times the charted danger area "R 58" is closed to navigation within stated distance from shore. During firing a red balloon is shown from the observation towers. Further information on VHF channel 16, call Tåme skjutfält, or phone +46 921 348405 alt. +46 921 349100.

September	Time	Range from shore
19	1200 - 2000	2,2 M
20 - 21	0800 - 2000	2,2 M
22	0800 - 1500	2,2 M

Not shown in ENC.

Bsp Bottenviken 2014/s06, s37, s38, s39, s40, s41, s42, s44

Försvarsmakten, Tåme skjutfält. Publ. 2 september 2017

Northern Baltic

* 12355

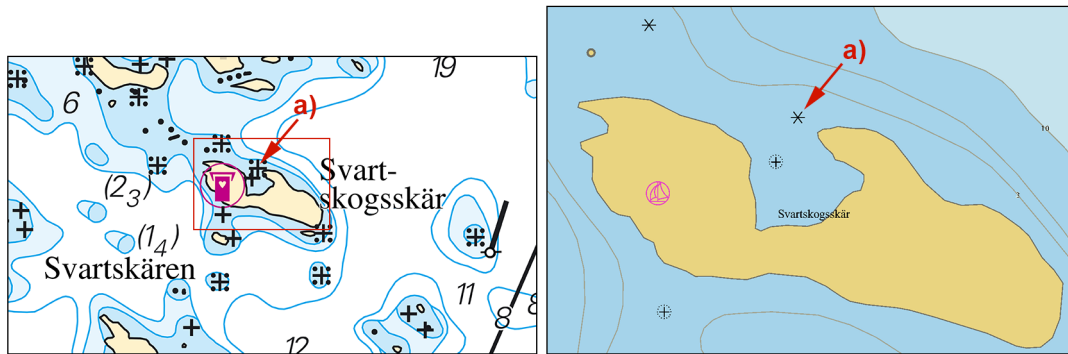
Chart: 621

Sweden. Northern Baltic. NW of Arkösund. Svartskogsskär. Depths.

Move	rock awash appr. 40 m NNW to a)	a)	58-34,254N	016-54,144E
Insert	underwater rock appr. 40 m SSW of a)			

Note. As the amendments may be difficult to see in ordinary chart scale, the chartlet also show the amendment in ENC, which is the charts used in electronic charts.

Bsp Ostkusten 2015/s35



Svartskogsskär in chart and ENC

Sjöfartsverket, Norrköping. Publ. 4 september 2017

* 12426 (T)

Chart: 6181

Sweden. Northern Baltic. Södertälje canal. Military exercise Aurora. Temporary bridge. Fairway closed.

See: 2017:666/12351(T)

Time: September 23 - 25, 2017

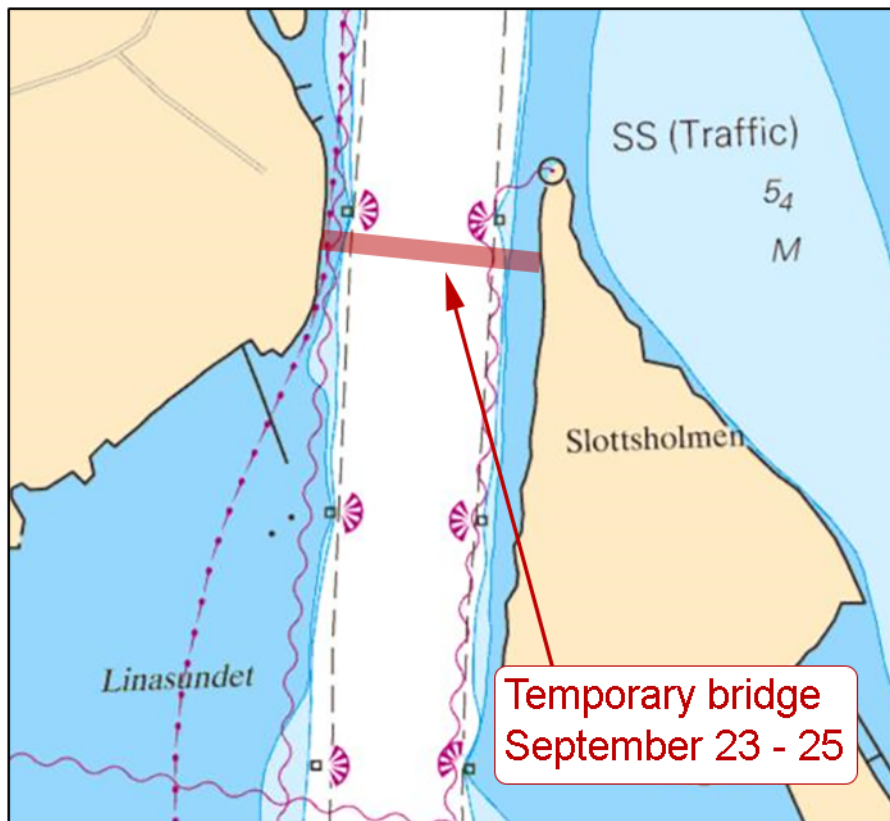
A temporary bridge is established over 'Linasundet' as a part of the military exercise Aurora17.

Passage will be made possible for commercial vessels which report to VTS Södertälje. The bridge will not be opened for pleasure craft.

Temporary bridge	59-13,16N	017-36,50E
------------------	-----------	------------

Not shown in ENC.

Bsp Mälaren - Hjälmaren 2016/s29, s30



Södertälje. Temporary bridge

Försvarsmakten. Publ. 7 september 2017

Lake Mälaren and Södertälje kanal

* 12388 (T)

Chart: 6141, 6142

Sweden. Lake Mälaren and Södertälje kanal. Stockholm. Riddarfjärden. Sailing race.

Time: September 14 - 16, 1300 - 1700 LT

Sailing races will take place on Riddarfjärden in Stockholm. The boats participating are marked with M32 flags. The race area is marked with red buoys.

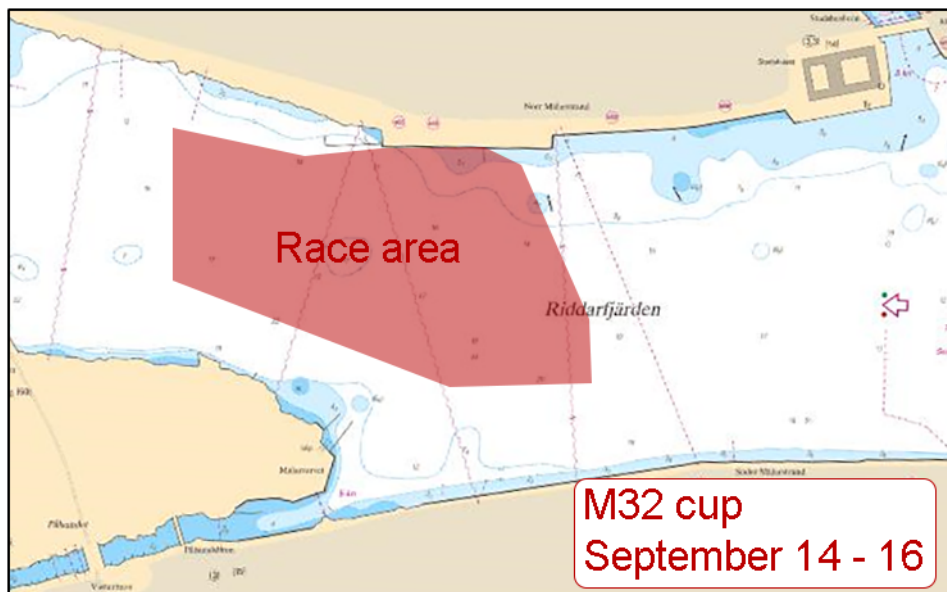
Contact: VHF ch 16, or tel +46(0)708-406335.

Riddarfjärden, Stockholm	59-19,50N	018-02,37E
--------------------------	-----------	------------

<http://m32world.com/>

Not shown in ENC.

Bsp Mälaren - Hjälmaran 2016/s51, Bsp Stockholm M 2016/s10



M32 cup. Riddarfjärden, Stockholm

M32 World. Publ. 7 september 2017

* 12401 (T)

Chart: 6141

Sweden. Lake Mälaren and Södertälje kanal. Stockholm. Essingesundet. W of bridge 'Gröndalsbron'. Geotechnical surveys 11 thru 15 sep 2017.

Time: 11 - 15 Sep 2017

Geotechnical surveys will be undertaken from a small barge inside the highlighted area shown in the chartlet.

The barge is held stationary by means of hydraulic support legs.

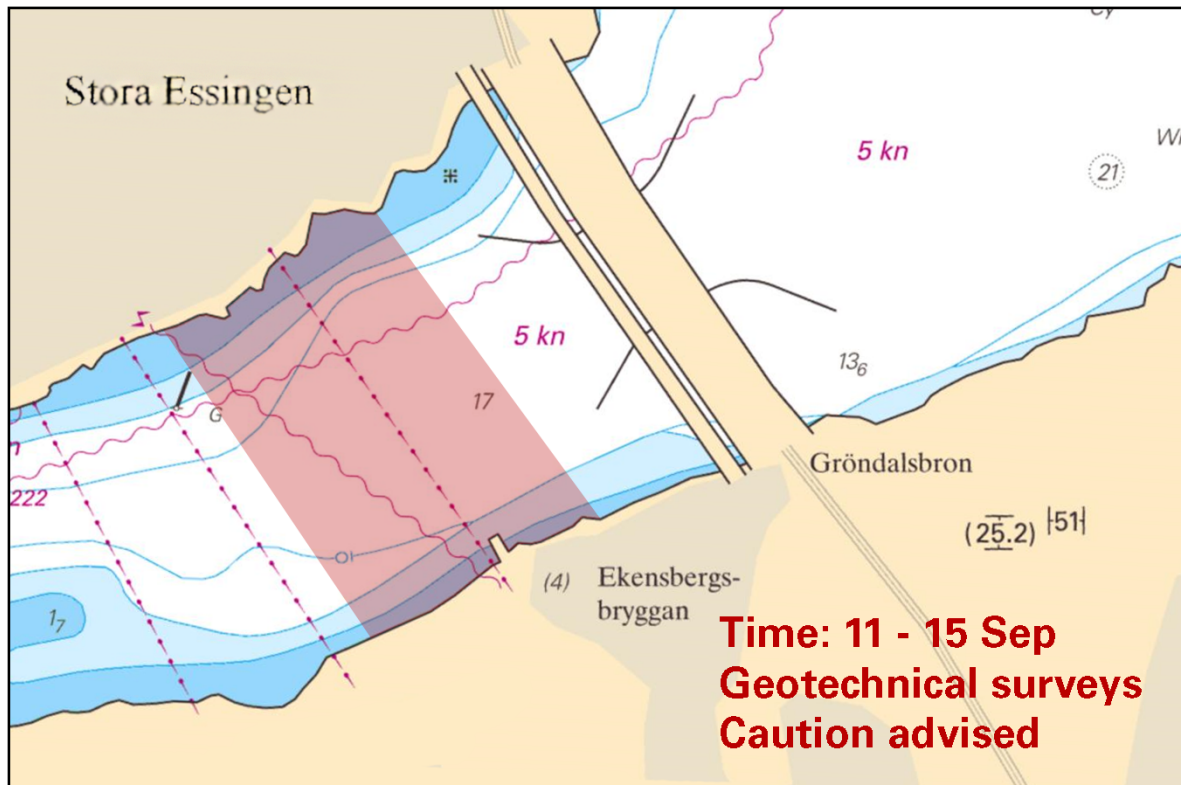
Normal working time is Mon - Thu 0630 - 1600 LT and Fri 0630 - 1300 LT. Additional hours may occur.

Contact Mr Viktor Enbom on +46 10 722 8459 or Mr Niklas Hammarbäck on +46 10 722 6820 for further details.

Mariners are advised to pass with caution.

area for geotechnical surveys	59-19,065N	017-59,734E
-------------------------------	------------	-------------

Bsp Mälaren - Hjälmaran 2016/s50



Geotechnical surveys in Essingesundet

WSP Samhällsbyggnad. Publ. 7 september 2017

* 12418 (T)

Chart: 6141, 6142

Sweden. Lake Mälaren and Södertälje kanal. Stockholm. Brunnsviken. Restricted area. Motor Boat Show - September 10, 2017.

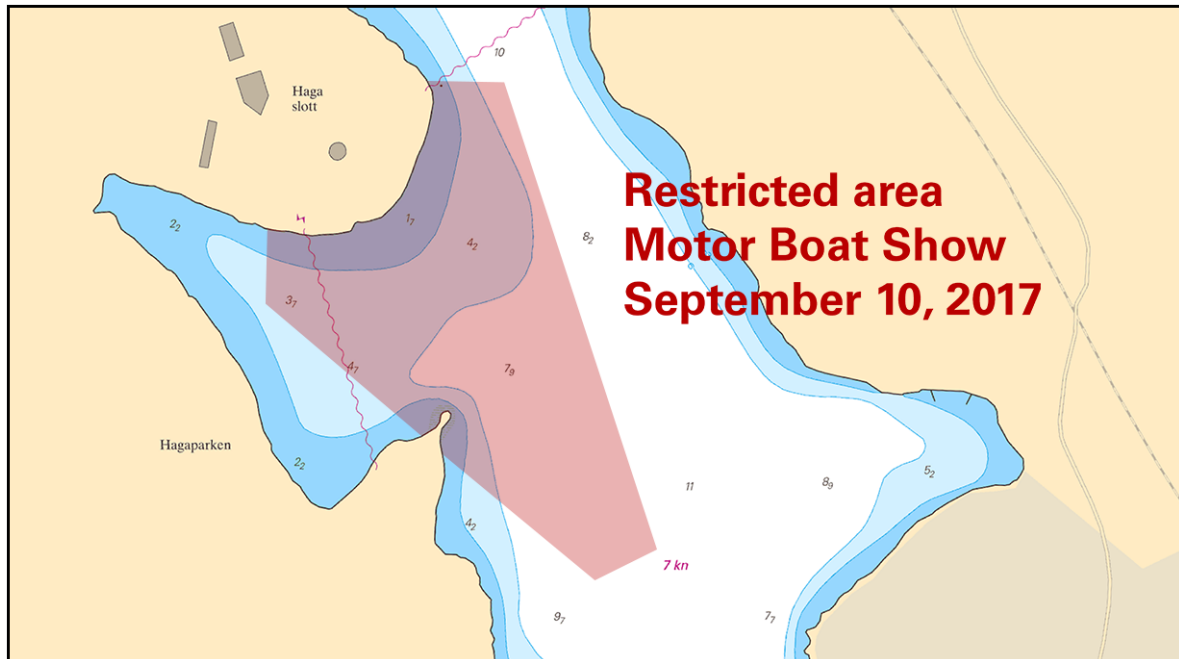
Time: September 10 between 1100 - 1130, 1230 - 1300, 1400 - 1430 and 1530 - 1600 LT

The highlighted area in the chartlet is closed for all unauthorised vessels in connection with a Motor Boat Show.

restricted area, Motor Boat Show	59-21,643N	018-02,686E
----------------------------------	------------	-------------

Not shown in ENC.

Bsp Stockholm M 2016/s08, s10, s12



Closed area Brunnsviken, Stockholm

Länsstyrelsen, Stockholm. Publ. 7 september 2017

* 12420 (T)

Chart: 6181

Sweden. Lake Mälaren and Södertälje kanal. Södertälje Canal. North of the lock. Fairway closed October 14-15, 2017.

Time: October 14, 0700 - October 15, 0700 LT, 2017.

Waters between Södertälje lock and Mälärbron bridge are closed to all traffic during stated time (24 hours).

The Lock	a)	59-11,53N	017-37,94E
Mälärbron bridge	b)	59-12,00N	017-37,67E

Bsp Mälaren - Hjälaren 2016/s30, s31



Södertälje Canal

Sjöfartsverket, Norrköping. Publ. 7 september 2017

Southern Baltic

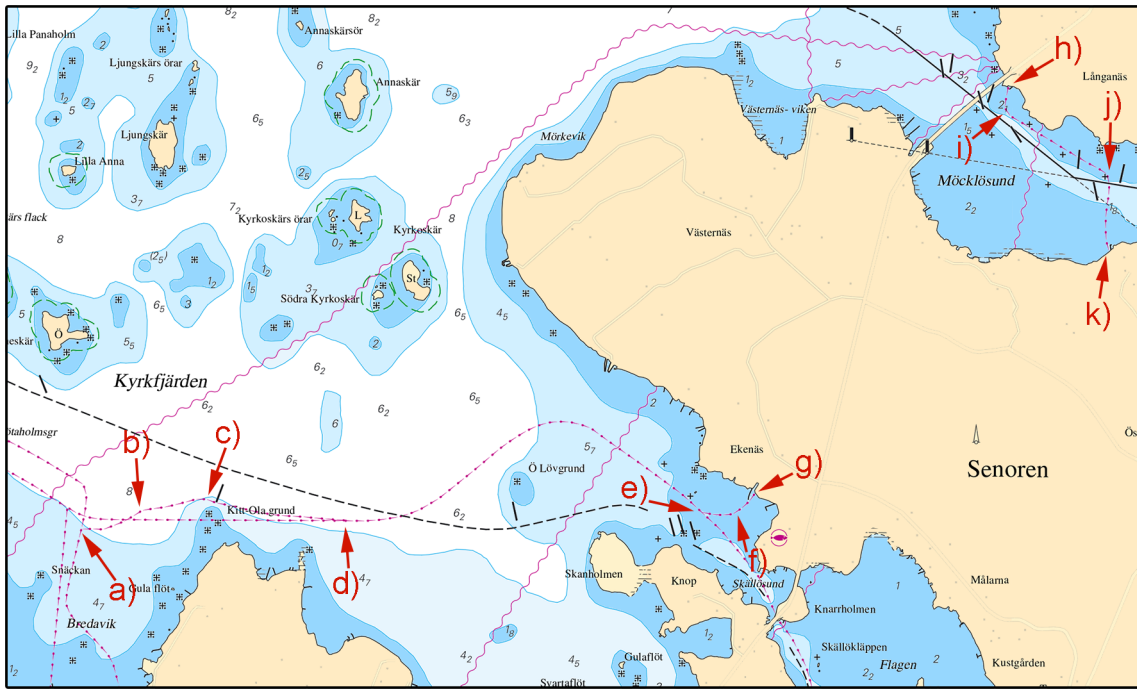
* 12276

Chart: 7411

Sweden. Southern Baltic. Karlskrona. Sturkö-Senoren-Möcklö. Pipelines.

Insert	pipeline between a) - d)	a)	56-07,31N	015-40,89E
		b)	56-07,36N	015-41,15E
		c)	56-07,39N	015-41,43E
		d)	56-07,34N	015-41,90E
Insert	pipeline between e) - g)	e)	56-07,36N	015-43,63E
		f)	56-07,35N	015-43,78E
		g)	56-07,4N	015-43,87E
Insert	pipeline between h) - k)	h)	56-08,41N	015-44,98E
		i)	56-08,35N	015-44,97E
		j)	56-08,19N	015-45,42E
		k)	56-08,0N	015-45,43E

Bsp Hanöbukten 2014/s36, s37, s41



Pipelines between Sturkö-Senoren-Möcklön

Karlskrona Kommun. Publ. 7 september 2017

The Sound

* 12416 (T)

Chart: 74, 92, 922

Denmark, Sweden. The Sound. N of Helsingborg - Helsingör. TSS In the Sound. Temporary established cables.

See: 2017:665/12387(T)

Caution area

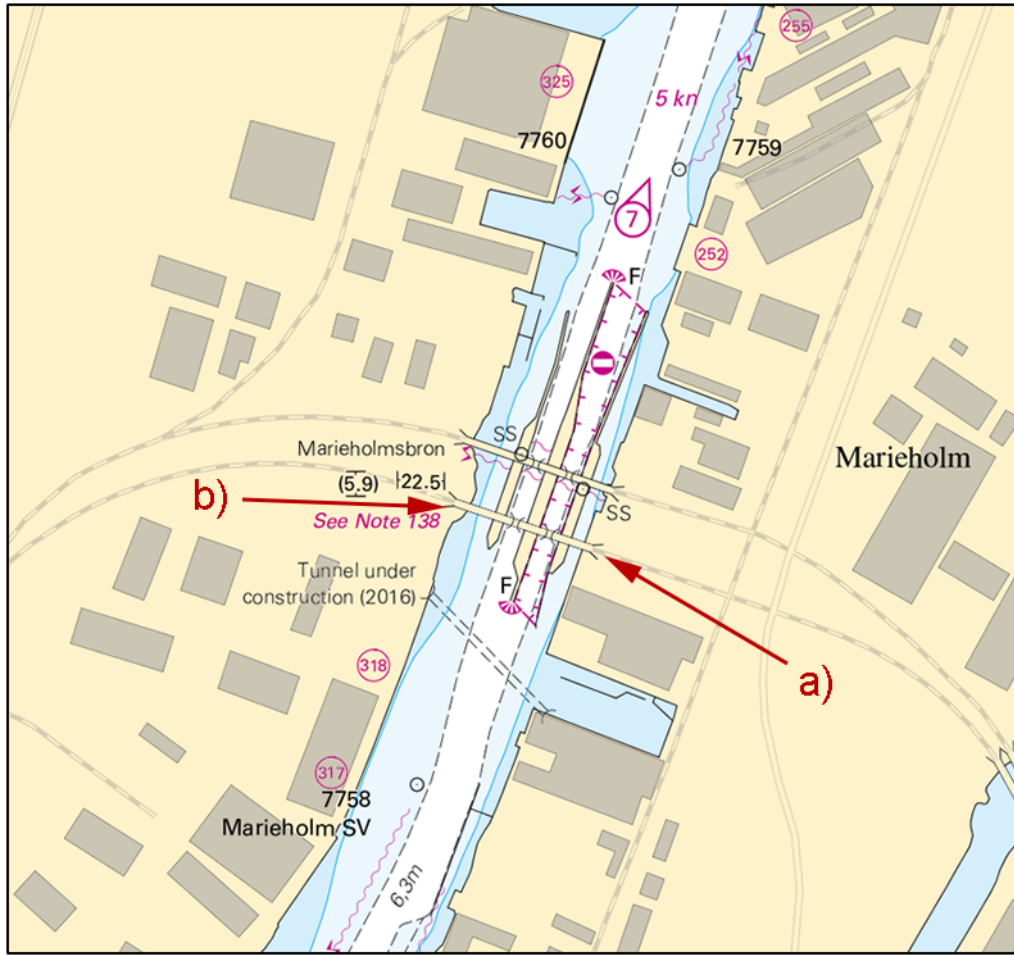
Time: Until end of March 2018

Two powercables are temporarily placed on the seafloor in an area outside Sofiero.

Mariners are advised not to conduct seabed activities such as anchoring and trawling within the area to avoid damage to cables.

Area with cables a) - d)	a)	56-04,918N	012-38,342E
	b)	56-04,259N	012-39,08E
	c)	56-04,381N	012-39,404E
	d)	56-05,048N	012-38,628E

Bsp Sydkusten 2012/s11, s12, s31



Bridges Mariefholmsbroarna

Sjöfartsverket, Göteborg. Publ. 7 september 2017

Skagerrak

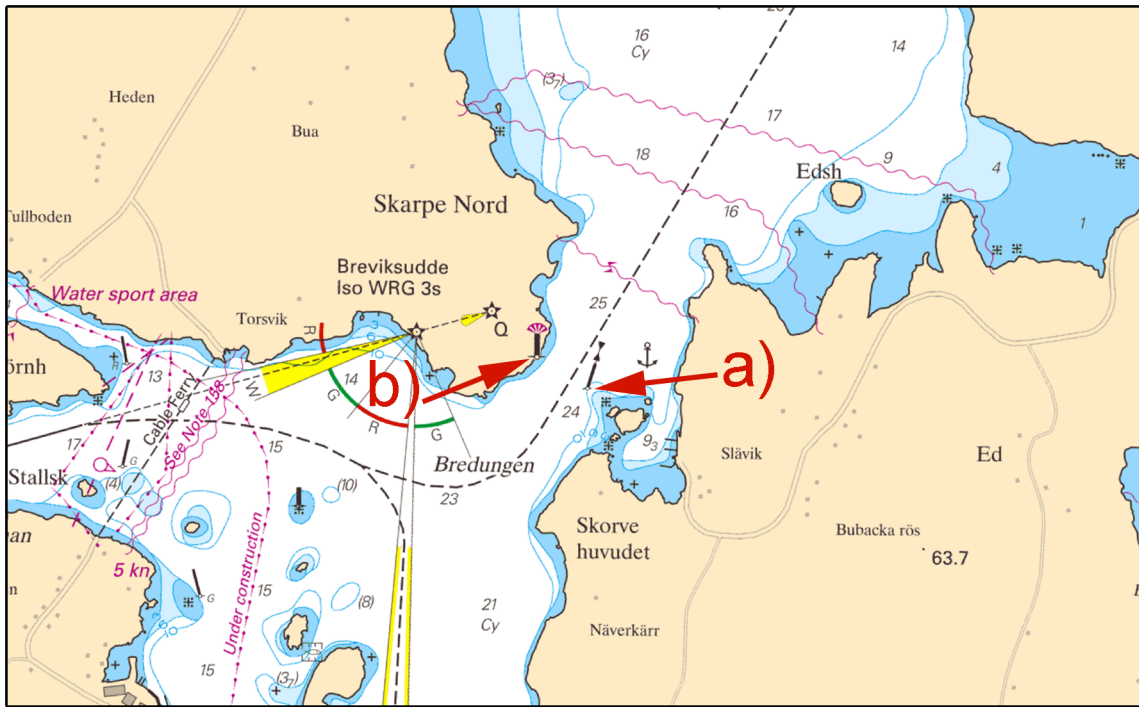
* 12410

Chart: 933, 9331

Sweden. Skagerrak. NE of Malmö. Åbyfjorden. Beacon and buoyage.

Insert	west cardinal spar buoy	a)	58-21,730N	011-21,901E
Insert	beacon with floodlight	b)	58-21,782N	011-21,737E

Bsp Västskusten N 2016/s15, s28



New buoy and beacon, Åbyfjorden

Sjöfartsverket, Norrköping. Publ. 2 september 2017

* 12421

Chart: 933, 9331

Sweden. Skagerrak. SW of Kungshamn. Pengeskärsbåden light. Rebuilding completed. Light back to normal operation.

Expired notices: 2017:666/12396(T)

Pengeskärsbåden light	58-20,83N	011-13,13E
-----------------------	-----------	------------

Bsp Västkusten N 2016/s14, s26

Sjöfartsverket, Fyrbjörn. Publ. 6 september 2017