

## Notices to Mariners, SWEDEN Swedish Maritime Administration



### Areas in Swedish Notices to Mariners



**SJÖFARTSVERKET**

Editorial office  
Swedish Maritime Administration  
Ufs  
601 78 NORRKÖPING  
Sweden  
tel: 0771 630 605  
e-mail: [ufs@sjofartsverket.se](mailto:ufs@sjofartsverket.se)  
Publisher:  
Hydrographer Patrik Wiberg



## ANNOUNCEMENTS

No Announcements in this booklet.

## NOTICES

### Bay of Bothnia

\* 12327 (T)

Chart: 41, 421

Sweden. Bay of Bothnia. E of Byske. Tåme. Gunnery exercises August 15 - 25, 2017.

Position: Approx.	64-55N	021-30E	Tåme Firing practice area
-------------------	--------	---------	---------------------------

Gunnery exercises will be carried out at Tåme Firing range during times listed below. During these times the charted danger area "R 58" is closed to navigation within stated distance from shore.

During firing a red balloon is shown from the observation towers. Further information on VHF channel 16, call Tåme skjutfält, or phone +46 921 348405 alt. +46 921 349100.

Day	Time	Range from shore
August 15 - 17	0800 - 1700	4,3 M
August 18	0800 - 1500	4,3 M
August 21	1200 - 1700	4,3 M
August 22 - 24	0800 - 1700	4,3 M
August 25	0800 - 1500	4,3 M

Not shown in ENC.

Bsp Bottenviken 2014/s06, s37, s38, s39, s40, s41, s42, s44

Försvarmakten, Tåme skjutfält. Publ. 8 augusti 2017

### Sea of Bothnia

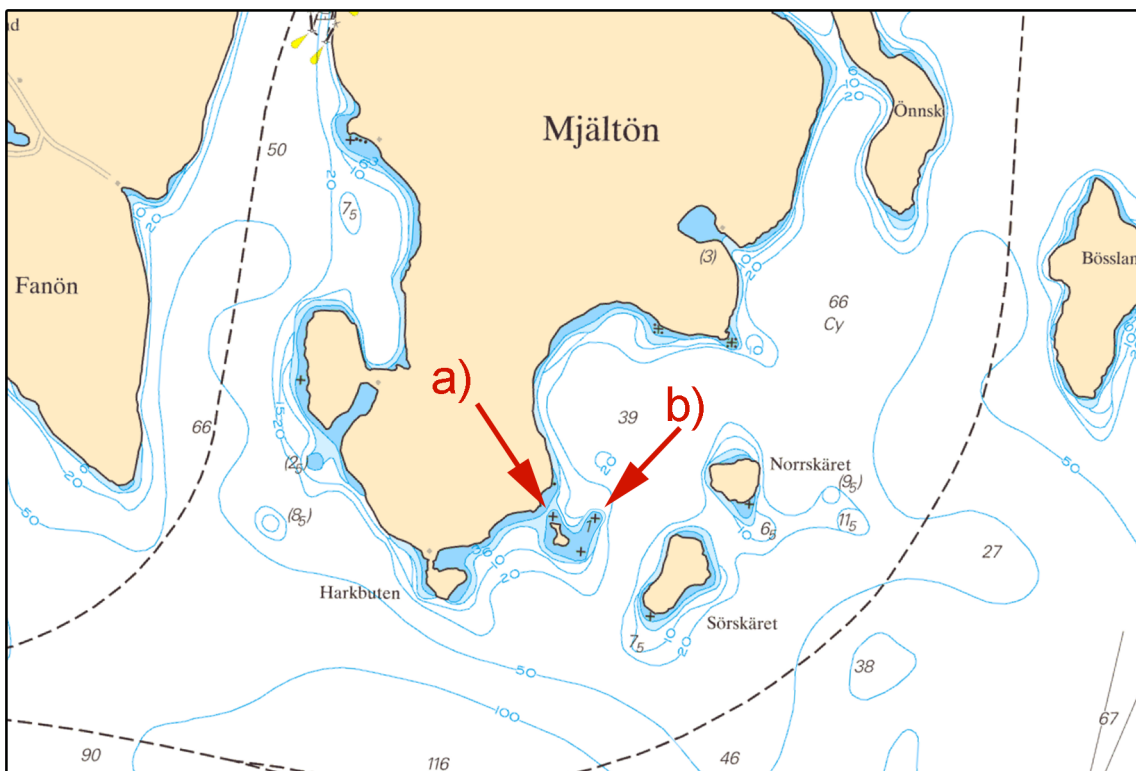
\* 12184

Chart: 522

Sweden. Sea of Bothnia. S of Örn skjöldsvik. Mjältön. Underwater rocks.

Insert	underwater rock and amend 3 m depth contour according to chartlet	a)	63-01,295N	018-31,03E
Insert	underwater rock and amend 3 m depth contour according to chartlet	b)	63-01,29N	018-31,32E

Bsp Bottenhavet N 2013/s18, s19



Mjältön

Sjöfartsverket, Norrköping. Publ. 8 augusti 2017

\* 12339 (T)

Chart: 532

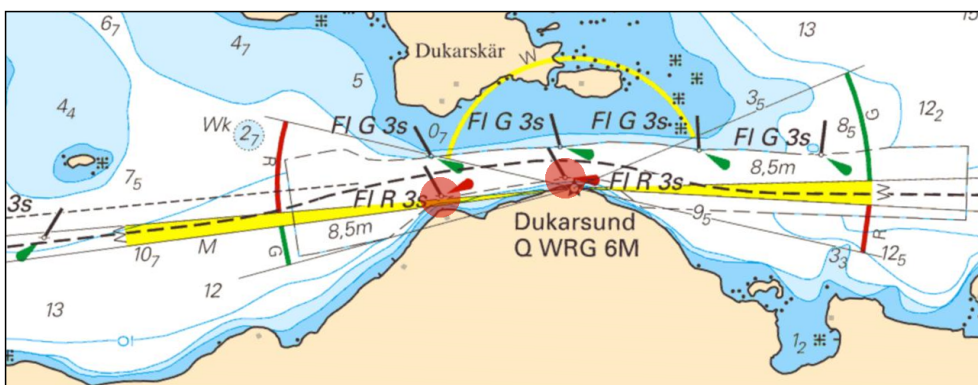
Sweden. Sea of Bothnia. Iggesund. Entrance to Skärnäs terminal. Dukarsund. Light buoys unlit.

Time: Until autumn 2017.

The two red light buoys in Dukarsund are temporarily unlit	61-37,37N	017-10,71E
--	-----------	------------

Not shown in ENC.

Bsp Bottenhavet S 2013/s44



Light buoys in Dukarsund temporarily unlit

Iggesunds Bruk. Publ. 10 augusti 2017

Sea of Åland and Archipelago Sea

\* 12000

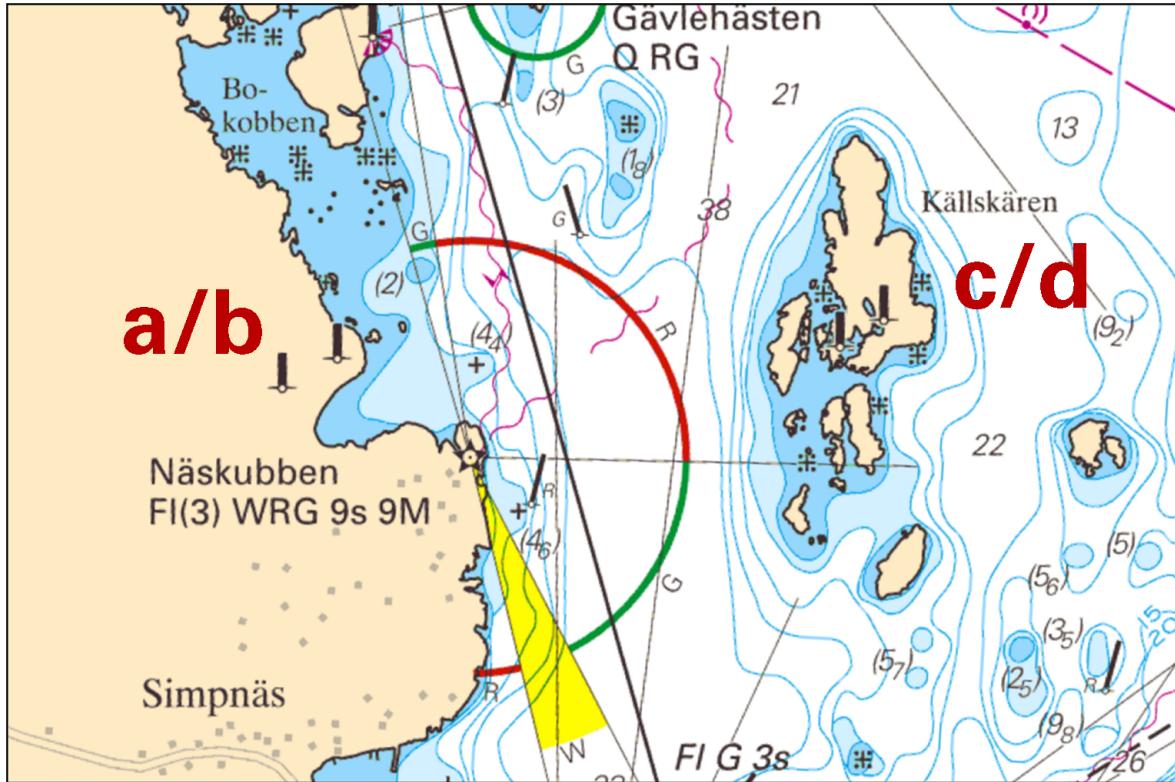
Chart: 61, 611, 619

Sweden. Sea of Åland and Archipelago Sea. Stockholm archipelago. SE of Vaddö. E of Björkö. Näskubben. Källskären. Beacons removed.



Delete	beacon	a)	59-52,61N	019-04,63E
Delete	beacon	b)	59-52,64N	019-04,73E
Delete	beacon	c)	59-52,65N	019-05,64E
Delete	beacon	d)	59-52,67N	019-05,72E

Bsp Stockholm N 2016/s08, s24, s61



Beacons removed

Sjöfartsverket, Norrköping. Publ. 8 augusti 2017

\* 12305

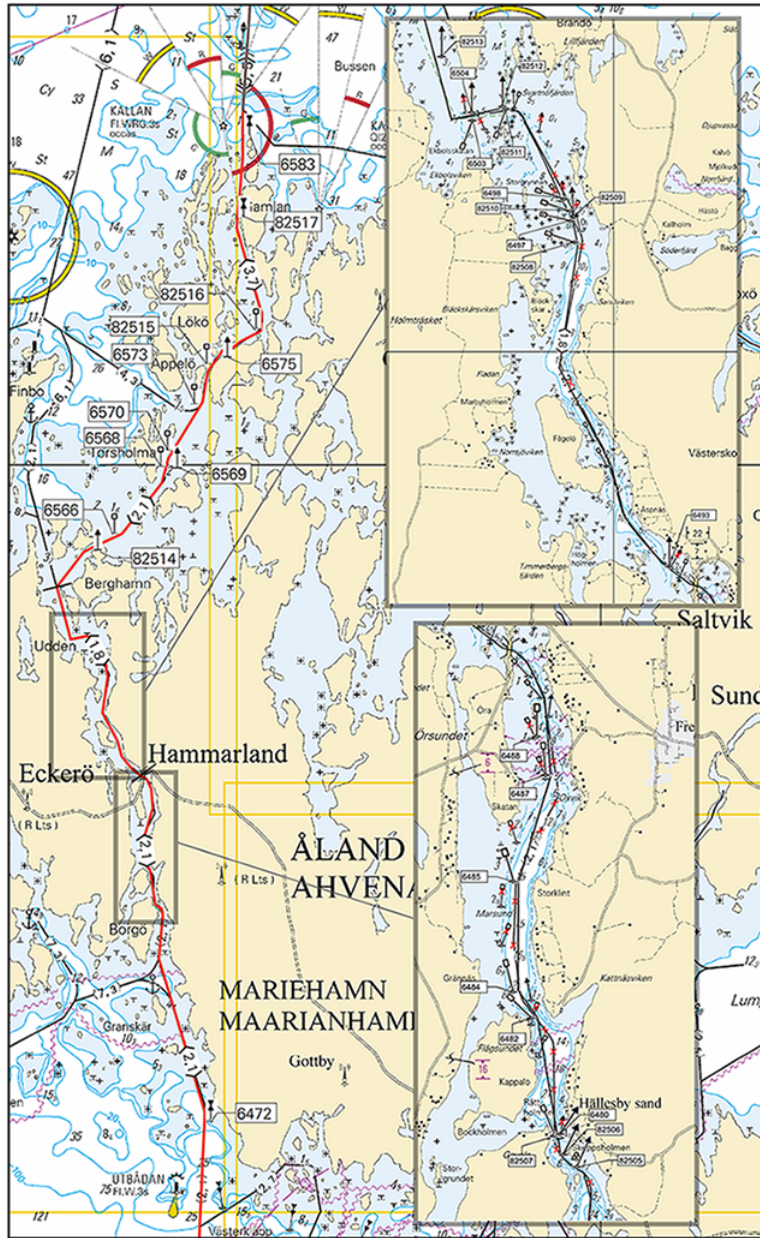
Chart:

Finland. Sea of Åland and Archipelago Sea. Åland. Hammarland. Maximum depth. Buoyage.

Fairway between Eckerö and Hammarland has been amended, see picture.  
For all details, please see Finnish Ntm no 8, 2017.

Amend	2,1 to 1,8	a)	60-17,3N	019-37,5E
Amend	2,1 to 1,8	b)	60-14,8N	019-39,4E

Bsp Stockholm N 2016/s49, s52



Picture from Finnish NtM no 8, 2017

Finnish NtM 2017:8/88. Publ. 9 augusti 2017

**Northern Baltic**

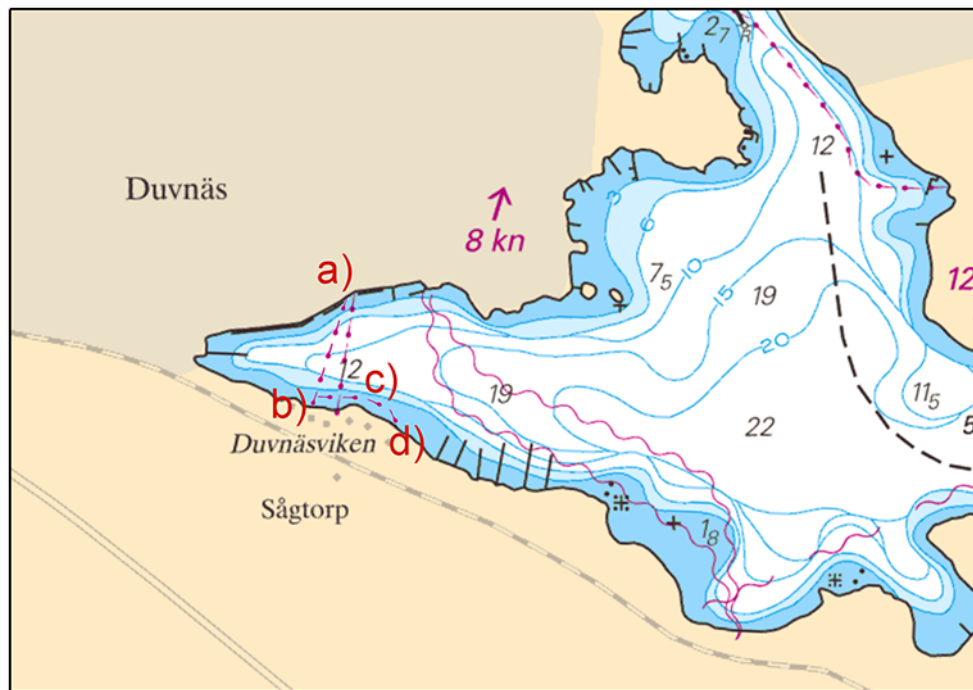
\* 12260

**Chart: 6142**

**Sweden. Northern Baltic. Stockholm. Duvnäsvisken. Submarine pipeline.**

Insert	pipeline between a) - d)	a)	59-18,079N	018-12,455E
		b)	59-17,978N	018-12,386E
		c)	59-17,969N	018-12,486E
		d)	59-17,940N	018-12,560E

Bsp Stockholm M 2016/s11



Duvnäsvisken

Sjöfartsverket, Norrköping. Publ. 9 augusti 2017

**\* 12317 (T)****Chart: 6171, 6172****Sweden. Northern Baltic. Torö. Ankarudden. Light Västra Kvarnhällan unreliable.**

Time: Until further notice.

The sectors of light "Västra Kvarnhällan" are unreliable.

Light "Västra Kvarnhällan"	58-47,60N	017-50,46E
----------------------------	-----------	------------

Adm. LoL. C6587.2

Bsp Mälaren - Hjälaren 2016/s39, Bsp Stockholm S 2016/s33

Sjöfartsverket, Norrköping. Publ. 10 augusti 2017

**\* 12326 (T)****Chart: 6141, 6142****Sweden. Northern Baltic, Lake Mälaren and Södertälje kanal. Stockholm. Bridges Liljeholmsbroarna and Skansbron. Cancelled opening times.**

Time: September 10, 2017.

Due to the competition Velothon Stockholm, bridge "Skansbron" will not be opened between 0728 - 0830 LT.

Bridge "Liljeholmsbroarna" will not be opened between 0835 - 1415 LT.

Skansbron	59-18,2N	018-04,8E
Liljeholmsbroarna	59-18,8N	018-01,9E

Not shown in ENC.

Bsp Mälaren - Hjälaren 2016/s51, s52, Bsp Stockholm M 2016/s06

Trafikkontoret, Stockholms stad. Publ. 10 augusti 2017

**\* 12335 (T)****Chart: 6142****Sweden. Northern Baltic. Vaxholm. The passage east of Kastellet. Construction works. Buoys. Caution.**

Time: From September 4 until January 2018.

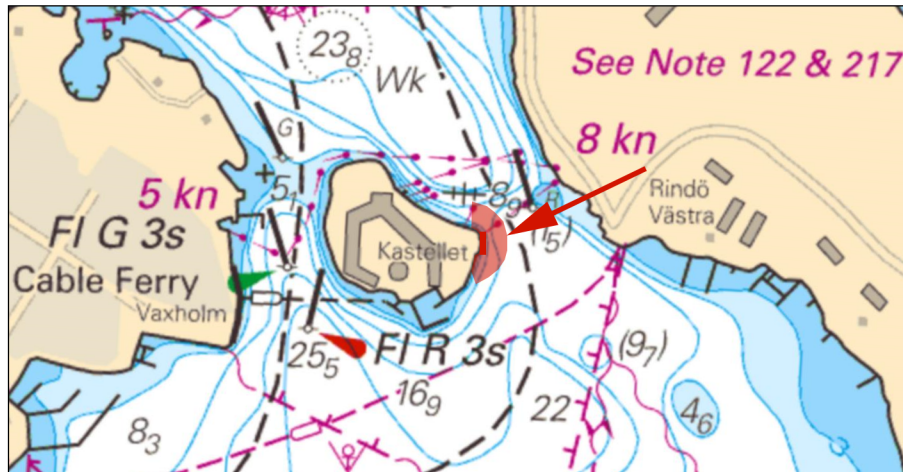
Demolition of existing quay and construction of new will be performed in stated position on the eastern shore of Kastellet.

The working area, which extends 40 m from the shore, will be marked by two yellow special buoys, FI Y 3s.

Passage must take place with great caution.

The quay	59-24,185N	018-21,700E
----------	------------	-------------

Bsp Stockholm M 2016/s14, s46, Bsp Stockholm N 2016/s42



Construction works at Kastellet, Vaxholm

Navit AB. Publ. 10 augusti 2017

\* 12337 (T)

Chart: 616, 6162, 6163

Sweden. Northern Baltic. E of Utö. Gunnery exercises. August 19 - 21.

Expired notices: 2017:662/12112(T)

Gunnery exercises will be carried out within Utö firing range during stated times. The current extension of the closed area is given in the table.

Information during practice times VHF channel 16, call Utö skjutfält, or phone +46 8 501 570 45. Information about upcoming practice times, phone: +46 10 823 18 23, Muskö Sjöcentral.

August	Time	Range from shore
19	0900 - 2400	3,8 M
20	0000 - 0300, 0900 - 2000	3,8 M
21	0900 - 2000	3,8 M
22	Firing Aug 22 cancelled	--

Position: Approx.	58-54N	018-20E	Utö Firing Danger Area
-------------------	--------	---------	------------------------

Not shown in ENC.

Bsp Stockholm S 2016/s17, s18, s19, s37

Försvarmakten, Utö. Publ. 10 augusti 2017

## Lake Mälaren and Södertälje kanal

\* 11776

Chart: 111

Sweden. Lake Mälaren and Södertälje kanal. Stäket. Depths.

See: 2017:632/11781

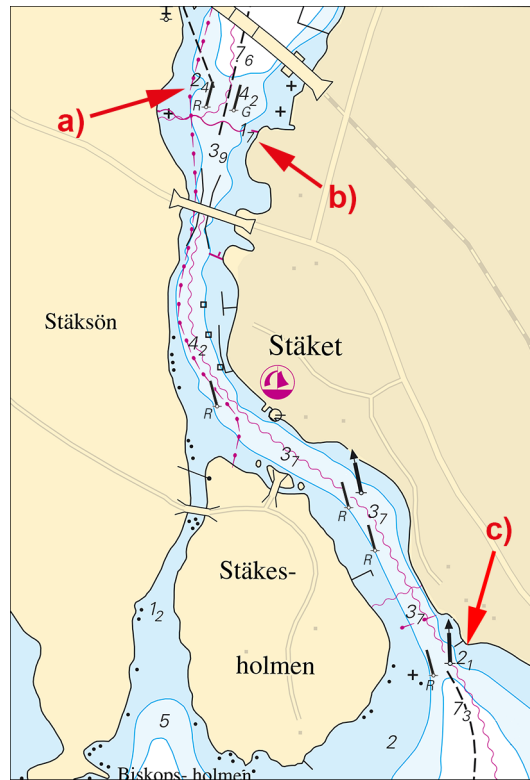
A hydrographic survey of the fairway through 'Stäket' has revealed significant less depth in the below stated positions.

Insert	2,4 m and amend 3 m contour	a)	59-28,445N	017-47,499E
Insert	1,7 m and amend 3 m contour	b)	59-28,418N	017-47,555E
Insert	2,1 m and amend 3 m contour	c)	59-28,116N	017-47,796E

These amendments, and other less important changes to depths, are shown in the chartlet.

Bsp Mälaren - Hjälaren 2016/s59





Stäket, amendments to depths

Sjöfartsverket, Norrköping. Publ. 10 augusti 2017

\* 12218 (T)

Chart: 6141, 6142

Sweden. Lake Mälaren and Södertälje kanal. Stockholm. Riddarfjärden. Sail race "Riddarfjärdsregattan", September 2 - 3, 2017.

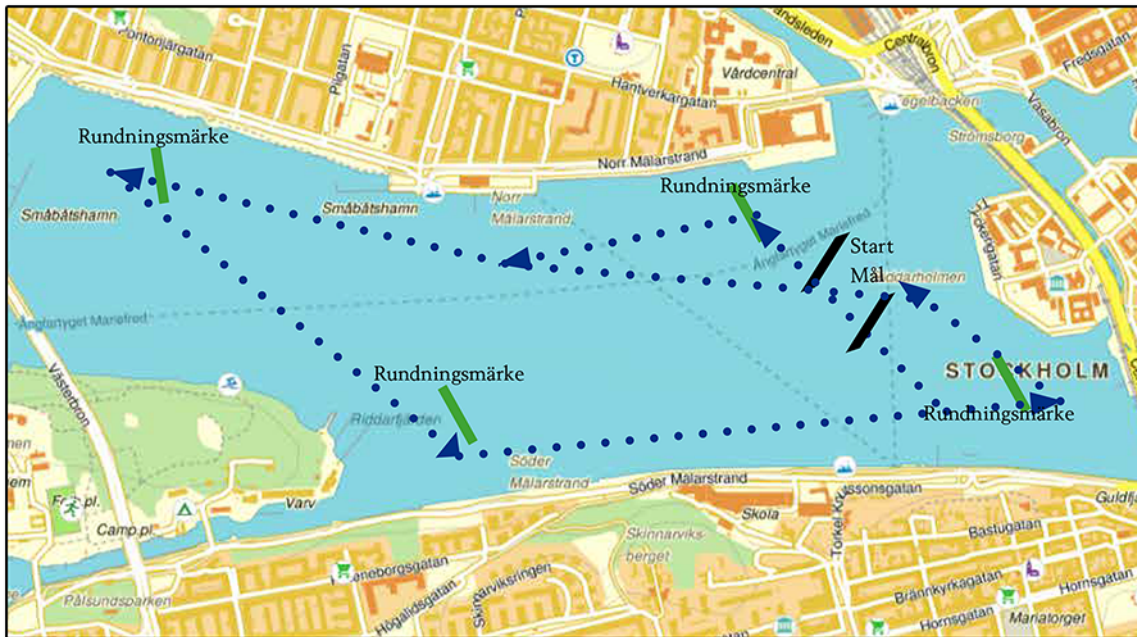
Time: September 2 - 3, 2017.

A sailrace will be held within the area shown in chartlet.

Riddarfjärden	59-19,4N	018-02,8E
---------------	----------	-----------

Not shown in ENC.

Bsp Mälaren - Hjälmarén 2016/s51, Bsp Stockholm M 2016/s10



Yacht race area, Riddarfjärden

Gaff Yacht Society. Publ. 9 augusti 2017

**\* 12232 (T)****Chart: 10, 113, 1131****Sweden. Lake Mälaren and Södertälje kanal. Kvicksundsbron bridge. Restricted bridge opening times.**

Time: Autumn 2017.

The Kvicksundsbron bridge will not be opened during following times, due to repair works:

September 11 - November 2, Monday - Thursday 0700 - 1900 LT.

November 6 - 19, daily 1900 - 0900 LT.

Kvicksundsbron bridge	59-27,1N	016-19,2E
-----------------------	----------	-----------

Bsp Mälaren - Hjälmaren 2016/s19, s20, s57

Sjöfartsverket, Norrköping Publ. 9 augusti 2017

**\* 12325 (T)****Chart: 111****Sweden. Lake Mälaren and Södertälje kanal. Munsön. Buoyage.**

Insert	special light spar buoy Q Y	a)	59-25,58N	017-34,81E
Insert	special light spar buoy Q Y	b)	59-25,53N	017-34,90E

Bsp Mälaren - Hjälmaren 2016/s48

Jehander AB. Publ. 10 augusti 2017

**\* 12330 (T)****Chart: 113, 1131****Sweden. Lake Mälaren and Södertälje kanal. Kvicksundsbron bridge. Maintenance works. Extended reporting.**

Expired notices: 2017:655/12193(T)

Time: Until August 27, 2017.

Reconstruction of pile fendering and lighting at Kvicksundsbron bridge is in progress.

During stated time vessels are requested to report to the bridge 60 minutes prior to arrival, and a second time 10 minutes prior to arrival.

'Kvicksundsbron' bridge	59-27,16N	016-19,16E
-------------------------	-----------	------------

Not shown in ENC.

Bsp Mälaren - Hjälmaren 2016/s19, s20, s57

Svevia. Publ. 8 augusti 2017



## Central Baltic

\* 12234

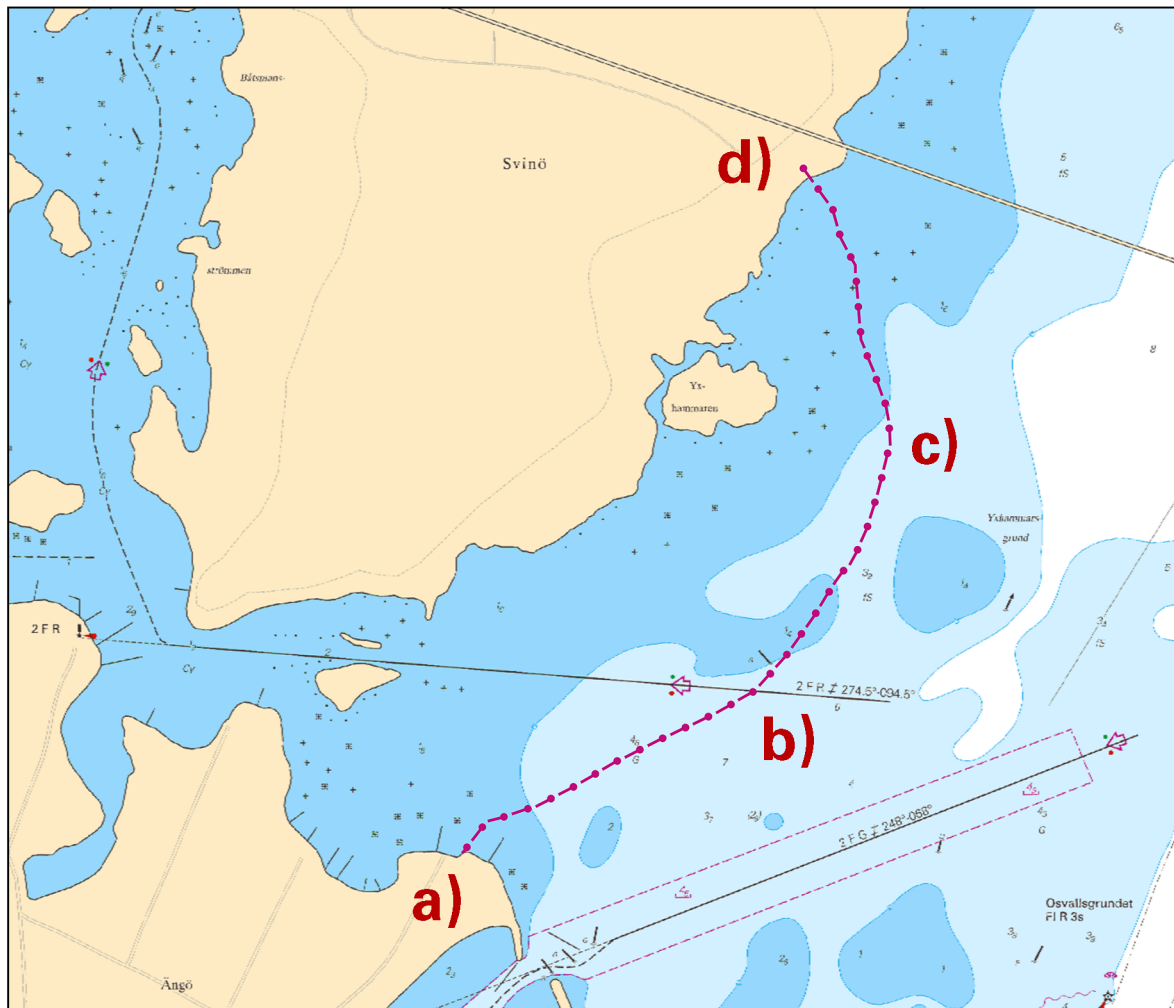
Chart: 712

Sweden. Central Baltic. Kalmarsund. N of Kalmar. Islands Ängö and Svinö. Submarine pipeline.

Insert	submarine pipeline between a) to d)	a)	56-40,396N	016-22,554E
		b)	56-40,504N	016-22,910E
		c)	56-40,673N	016-23,076E
		d)	56-40,851N	016-22,976E

Chartlet shows route as laid

Bsp Kalmarsund 2014/s34, s35



Submarine pipeline Ängö - Svinö

Kalmar kommun. Publ. 5 augusti 2017

## Kattegat

\* 12332 (T)

Chart: 923

Sweden. Kattegat. Hallands Väderö. Torekov. Torekov Open Water. Swimming competition august 27.

Time: August 27, 2017, 1000 - 1230 LT.

Swimming competition Torekov Open Water has approximately 150 competitors that will swim from Kappelhamn on Hallands Väderö through the island Vingaskär and further to "Morgonbryggan" in Torekov. A lot of boats, stand up paddleboards and kayaks will be present for the swimmers safety.

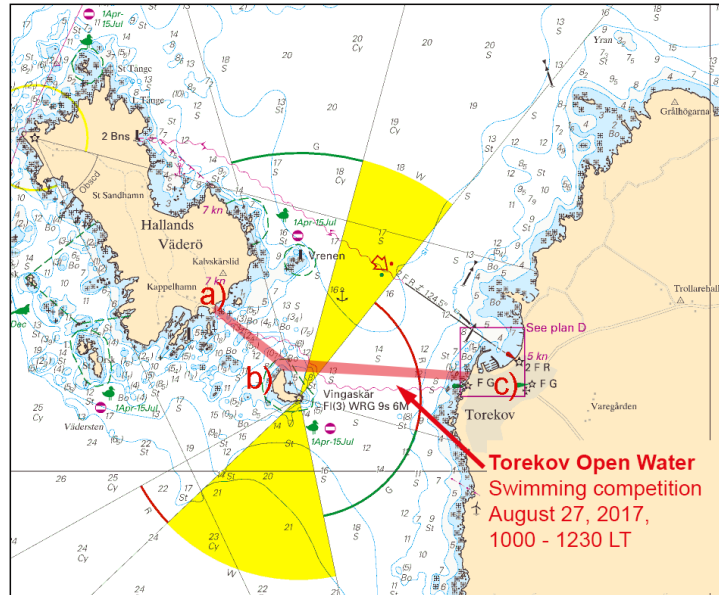
All vessels are advised to pass with caution.

The event manager can be contacted on telephone +46 70 2808564.

Kappelhamn, Hallands Väderö	a)	56-25,97N	012-34,5E
Vingaskär	b)	56-25,63N	012-35,30E
Morgonbryggan, Torekov	c)	56-25,58N	012-37,31E

Not shown in ENC.

Bsp Västkusten S 2016/s32



Swimming competition Torekov Open Water

Tävlingsledningen Torekov Open Water. Publ. 9 augusti 2017

\* 12338 (T)

Chart: 932, 9321

Sweden. Kattegat. S of Marstrandsön. Sailing competition, C55. Closed water August 11 - 13.

Time: August 11-13, 2017, daily 0900-1700 LT.

Sailing competitions for C55 will take place during stated times.

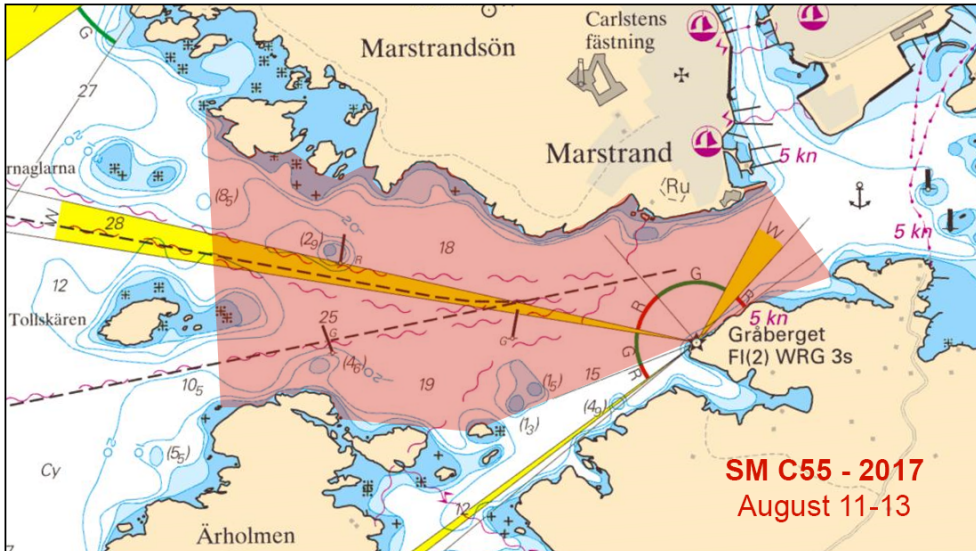
The area, which has been indicated on the chartlet, is closed for unauthorized vessels. A narrow passage for other boats will however be maintained close to the shore off Gråberget lighthouse.

For contact with security boats, call +46 768 58 12 27 or +46 705 55 00 40.

Sailing race area	57-52,82N	011-34,47E
-------------------	-----------	------------

Not shown in ENC.

Bsp Västkusten S 2016/s40, s42



Sailing race area for C55 August 11-13, 2017

Länsstyrelsen, Vänersborg. Publ. 10 augusti 2017

**Skagerrak**

\* 12334 (T)

Chart: 933, 9331

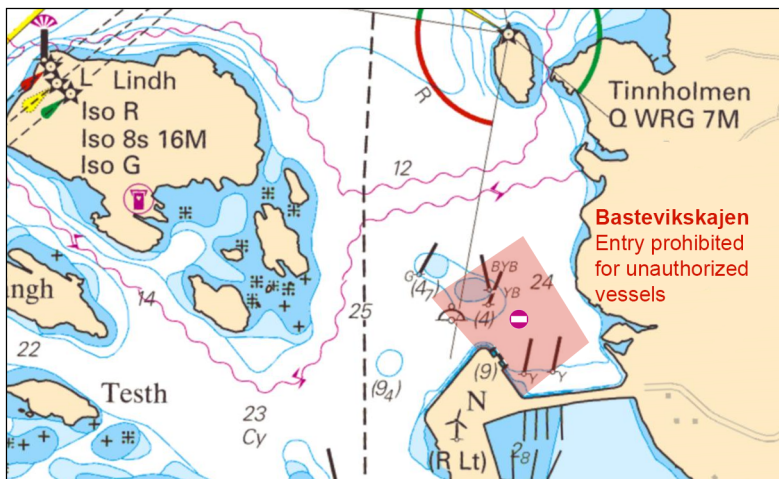
Sweden. Skagerrak. S of Brofjorden. Bastevikskajen. Entry prohibited.

Time: August 14 - October 31, 2017.

No unauthorized traffic allowed inside position 1 - 4	1.	58-19,044N	011-23,797E
	2.	58-19,121N	011-23,968E
	3.	58-19,258N	011-23,782E
	4.	58-19,173N	011-23,571E

Not shown in ENC.

Bsp Västskusten N 2016/s15, s16, s19, s29



Entry prohibited at Bastevikskajen

Länsstyrelsen, Vänersborg. Publ. 9 augusti 2017

**Inshore waters**

\* 12289

Chart:

Sweden. Inshore waters. Lake Roxen. N of Linköping. L Risö. Shoal.

Insert	underwater rock encircled by a 3 m depth contour as shown	58-27,678N	015-37,360E
--------	---	------------	-------------

Bsp Göta kanal 2011/s08



Lake Roxen, north of Linköping

Sjöfartsverket, Norrköping. Publ. 5 augusti 2017