

## Notices to Mariners, SWEDEN Swedish Maritime Administration



### Areas in Swedish Notices to Mariners



**SJÖFARTSVERKET**

Editorial office  
Swedish Maritime Administration  
Ufs  
601 78 NORRKÖPING  
Sweden  
tel: 0771 630 605  
e-mail: [ufs@sjofartsverket.se](mailto:ufs@sjofartsverket.se)  
Publisher:  
Hydrographer Patrik Wiberg



## ANNOUNCEMENTS

No Announcements in this booklet.

## NOTICES

### Northern Baltic

\* 12182

Chart: 612

#### Sweden. Northern Baltic. Ingmarsö - Äpplarö. Amendments to depths.

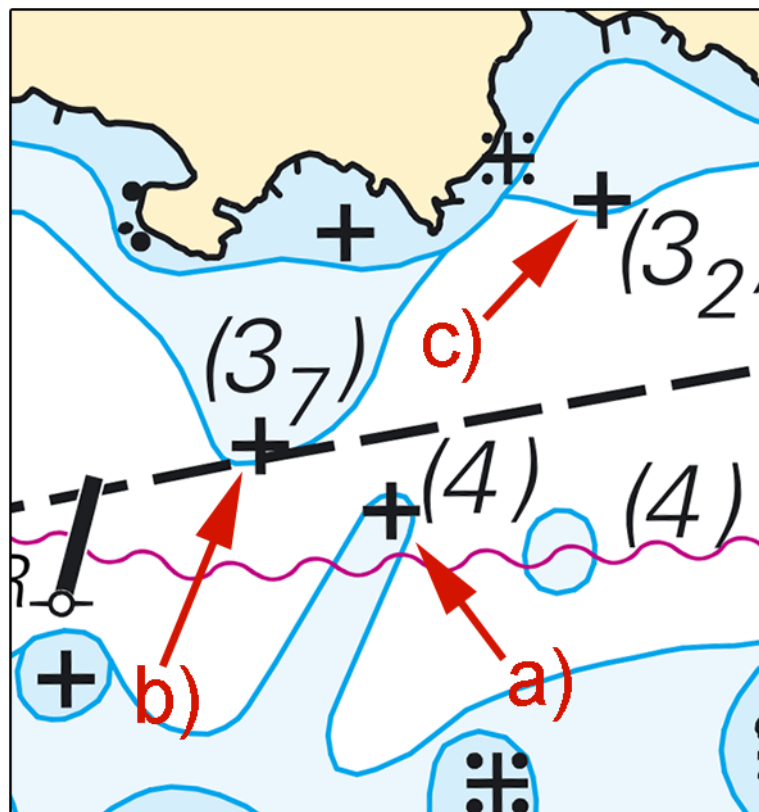
A hydrographic survey in the sound between Äpplarö and Ingmarsö has shown other depths than charted.

Important amendments are shown in the table below.

The changes are available as an update of ENC.

<b>Insert</b>	underwater rock, depth 4 m	a)	59-28,89N	018-43,30E
<b>Insert</b>	underwater rock, depth 3,7 m	b)	59-28,92N	018-43,17E
<b>Insert</b>	underwater rock, depth 3,2 m	c)	59-29,05N	018-43,51E
<b>Delete</b>	depth 6,9 m	d)	59-28,88N	018-43,23E
<b>Amend</b>	6 m depth contours according to chartlet			

Bsp Stockholm N 2016/s29, s39



Äpplarö

Sjöfartsverket, Norrköping. Publ. 6 juli 2017

\* 12216

Chart: 6143, 6144, 615, 619

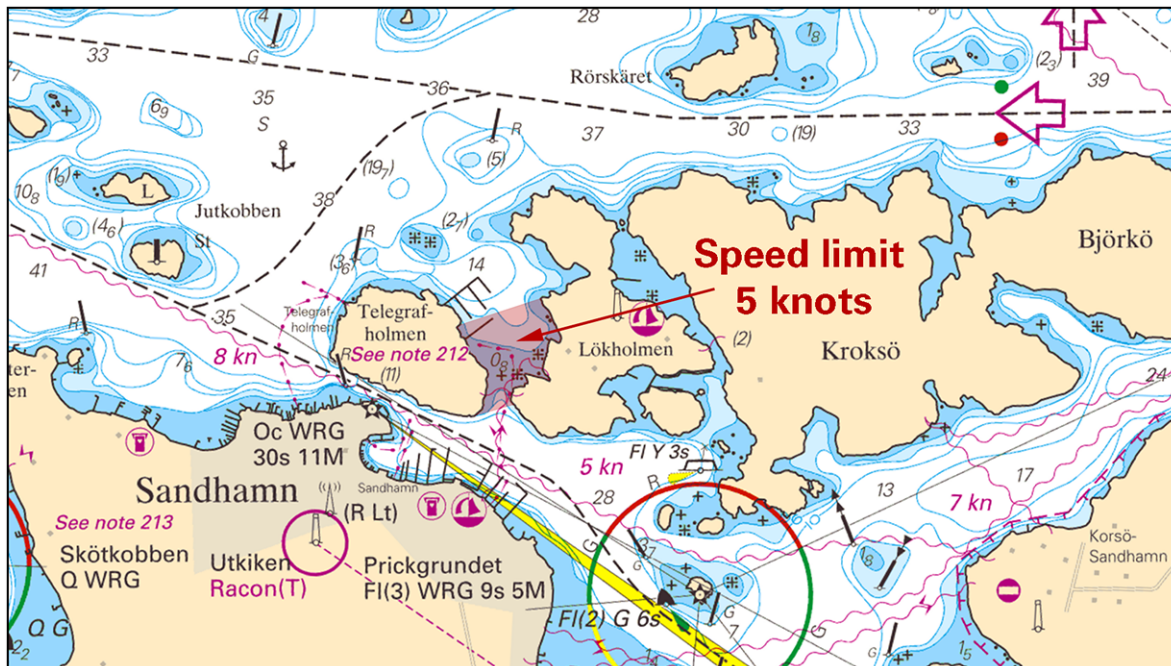
#### Sweden. Northern Baltic. Sandhamn. Telegrafholmen - Lökholmen. Speed limit 5 knots.

Time: From August 1, 2017

A speed limit of 5 knots is valid within the marked area as shown in the chartlet.

Lökholmen - Telegrafholmen	59-17,493N	018-55,274E
----------------------------	------------	-------------

Bsp Stockholm M 2016/s25, s31, s32, Bsp Stockholm N 2016/s41



Area with speed limit

Länsstyrelsen i Stockholms län. Publ. 6 juli 2017

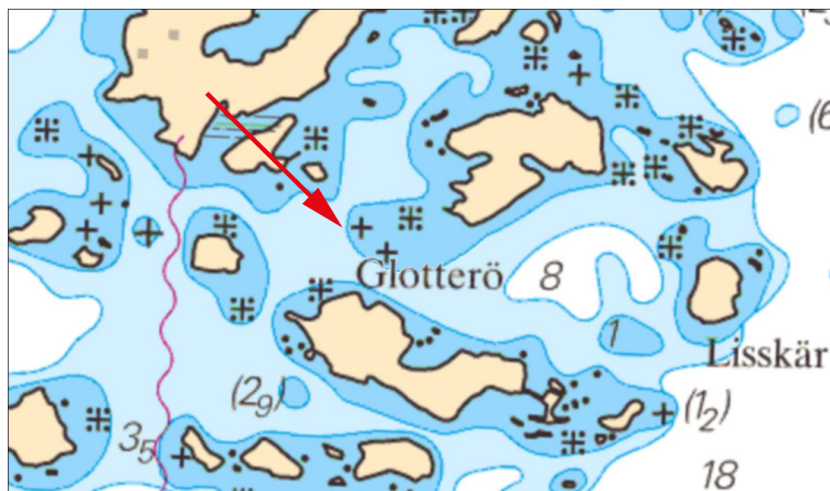
\* 12263

Chart: 621

Sweden. Northern Baltic. N om Arkösund. S om Lindöja. Glotterö. Less depth.

<b>Amend</b>	Extend 3 m contour S, insert underwater rock and delete depth 4 m, see chartlet	58-31,98N	016-56,60E
--------------	---	-----------	------------

Bsp Ostkusten 2015/s32, s35



Amend depths N of Glotterö

Sjöfartsverket, Norrköping. Publ. 1 juli 2017

\* 12269

Chart: 6143, 6144, 615

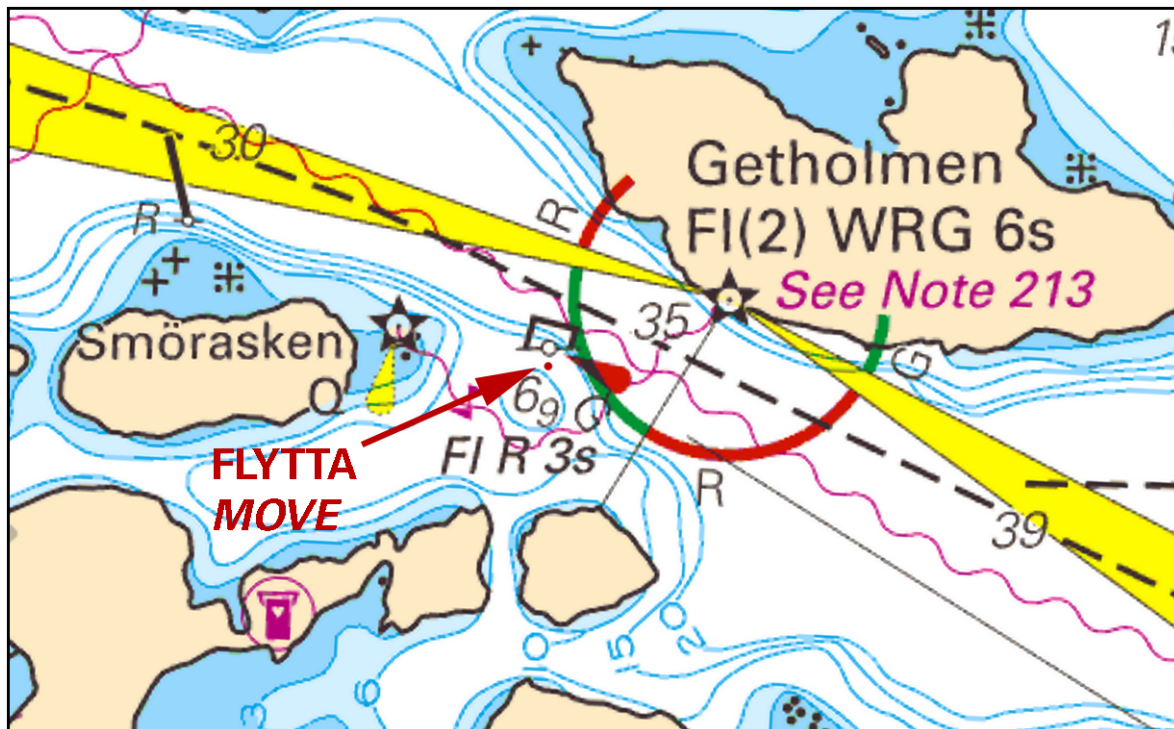
Sweden. Northern Baltic. NW of Sandhamn. S of Getholmen. Smörasken. Buoyage.

Expired notices: 2017:650/12100

<b>Amend</b>	light spar buoy to light buoy FI R 3s and move as per chartlet to	59-18,015N	018-52,281E
--------------	---	------------	-------------

Bsp Stockholm M 2016/s25





Smörasken

Sjöfartsverket, Stockholm. Publ. 6 juli 2017

\* 12270

Chart: 6143, 6144, 615, 619

Sweden. Northern Baltic. Fairway between Almagrundet - Sandhamn - Kanholmsfjärden. Maximum draught restored to 11,0 m.

Expired notices: 2017:651/12134

Permitted maximum draught in the fairway between Almagrundet approaches and Kanholmsfjärden (Sandhamnsleden) has been restored to 11,0 m.

Almagrundet	a)	59-09,4N	019-07,5E
Kanholmsfjärden	b)	59-19,7N	018-47,6E

Bsp Stockholm M 2016/s24, s25, s31, s32, s33, s40, s41, s47, s52, Bsp Stockholm N 2016/s41

Sjöfartsverket. Publ. 6 juli 2017

**Lake Mälaren and Södertälje kanal**

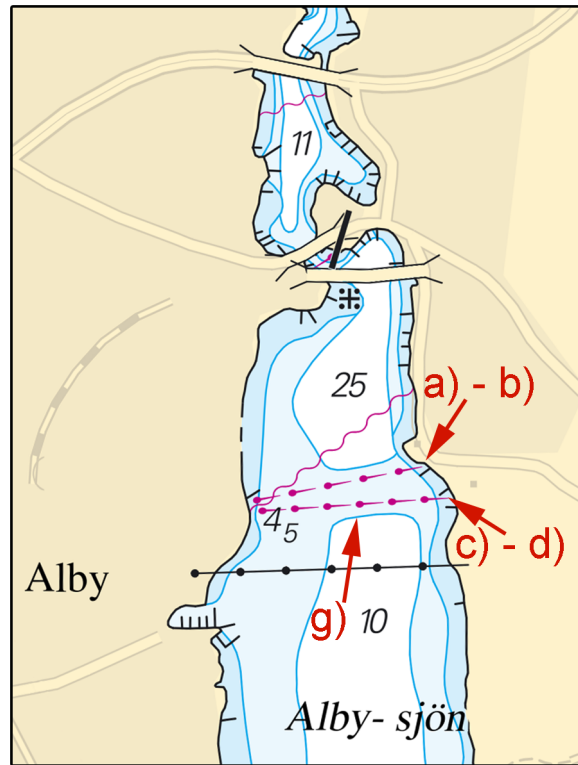
\* 12174

Chart: 111

Sweden. Lake Mälaren and Södertälje kanal. Albysjön. Pielines.

<b>Insert</b>	pipeline between a) - b)	a)	59-14,656N	017-52,67E
		b)	59-14,60N	017-52,12E
<b>Insert</b>	pipeline between c) - d)	c)	59-14,605N	017-52,75E
		d)	59-14,58N	017-52,13E
<b>Delete</b>	pipeline between e) - f)	e)	59-14,56N	017-52,744E
		f)	59-14,56N	017-52,13E
<b>Amend</b>	6 m depth contour according to chartlet	g)		

Bsp Mälaren - Hjälaren 2016/s49



Albysjön

Sjöfartsverket, Norrköping. Publ. 1 juli 2017

\* 12259

Chart: 111

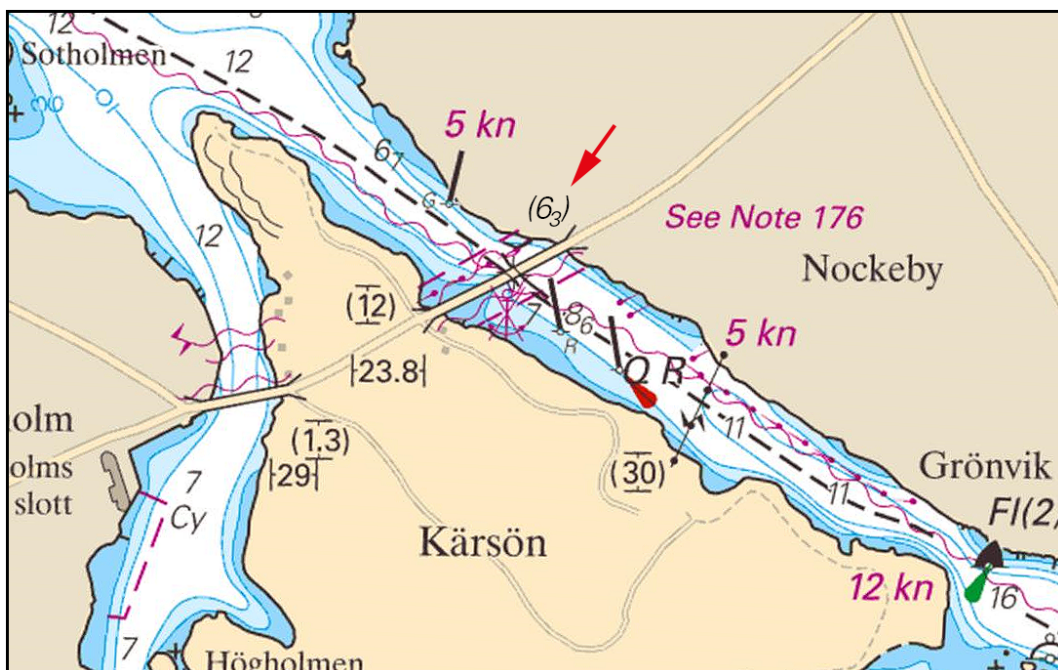
Sweden. Lake Mälaren and Södertälje kanal. Nockebybron bridge. Less depth above pipeline.

Expired notices: 2017:634/11830

A recent survey has revealed a least depth of 6,3 m on the fresh water pipeline close NW of the Nockebybron bridge.

Amend	least depth in passage from 6.6 m to 6,3 m	a)	59-19,680N	017-54,504E
-------	--	----	------------	-------------

Bsp Mälaren - Hjälmarén 2016/s49



Less depth at Nockebybron bridge

Sjöfartsverket, Norrköping. Publ. 1 juli 2017

**Kattegat**

\* 12244

Chart: 931, 932, 9321

**Sweden. Kattegat, Skagerrak. Marstrand. Wallhamn. Stenungsund. Buoyage. Beacons.**

Expired notices: 2017:656/12211(P)

Amendments to buoyage and beacons in the fairway Hätteberget - Stenungsund have been performed. Some of the amendments that was included in notice 12211(P) will not be conducted or will be done at a later stage.

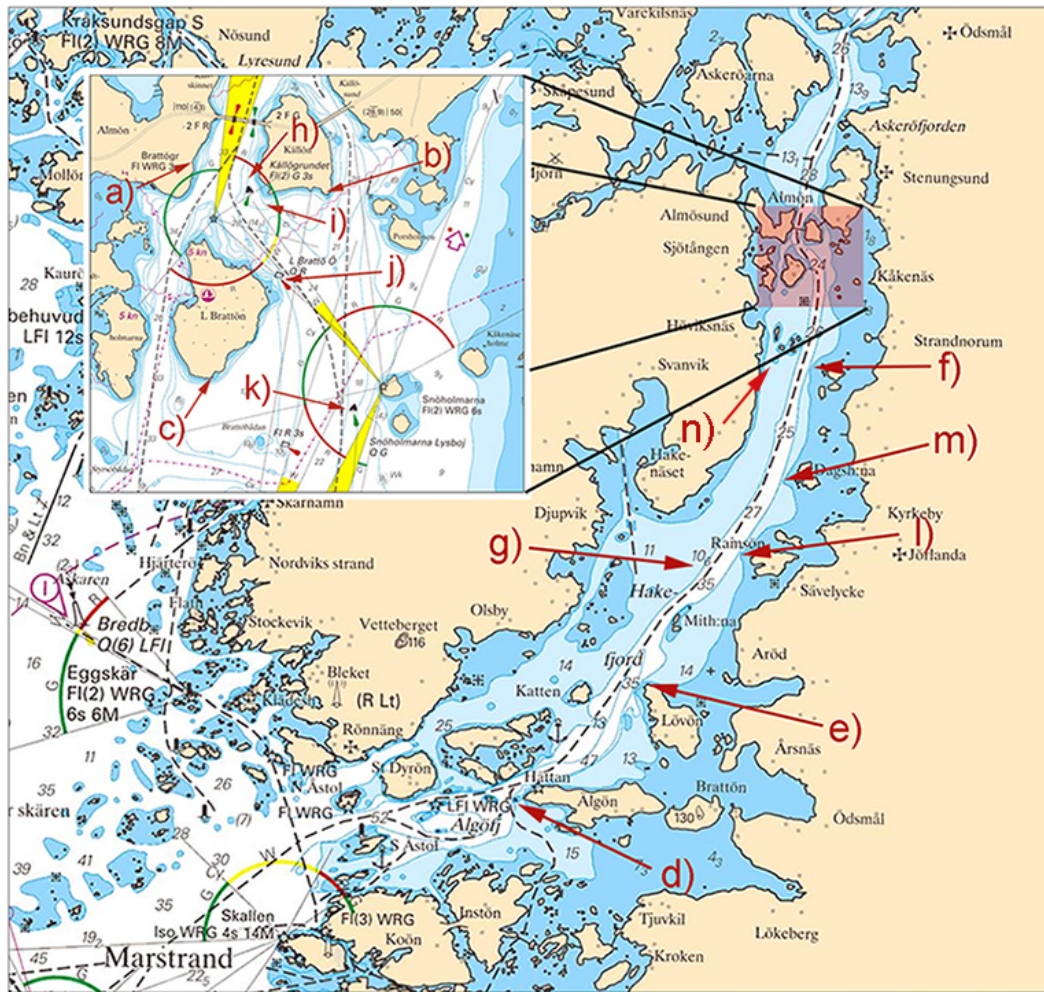
Amendments have been done as follows:

<b>Insert</b>	beacon		a)	58-03,436N	011-46,567E
<b>Insert</b>	beacon		b)	58-03,323N	011-47,405E
<b>Insert</b>	beacon		c)	58-02,692N	011-46,706E
<b>Insert</b>	beacon		d)	57-55,419N	011-39,540E
<b>Insert</b>	light 'Lövön' Oc 3s 10M		e)	57-57,008N	011-43,055E
<b>Replace</b>	starboard hand spar buoy with starboard hand light buoy FI(2) G 6s		f)	58-01,540N	011-47,198E
<b>Replace</b>	isolated danger mark with an east cardinal light buoy VQ(3) 5s and move to		g)	57-58,737N	011-44,395E
<b>Move</b>	starboard light buoy 'Källögrundet' approximately 100 meters N	Amend character to FI G 3s	h)	58-03,369N	011-46,932E
<b>Insert</b>	starboard hand light buoy FI G 3s		i)	58-03,273N	011-47,016E
<b>Amend</b>	character on the port hand light buoy 'Lilla Brattö Ö' to FI R 3s		j)	58-03,032N	011-47,120E
<b>Amend</b>	character on the starboard hand light buoy 'Snöholmarna Lysboj' to FI G 3s		k)	58-02,587N	011-47,602E
<b>Insert</b>	starboard hand spar buoy		l)	57-58,922N	011-45,393E
<b>Insert</b>	starboard hand spar buoy		m)	57-59,938N	011-46,450E
<b>Insert</b>	starboard hand spar buoy		n)	58-01,640N	011-46,241E

Note: Lights at the fixed installations (light Lovön and beacons) are not yet operational. They will be installed shortly.

Bsp Västkusten N 2016/s25, s36, s37, Bsp Västkusten S 2016/s13, s14, s15, s38, s39, s40, s42, s64, s65





New and amended buoyage and beacons in fairway to Stenungsund

Sjöfartsverket, Norrköping. Publ. 6 juli 2017

\* 12261

Chart: 1352, 9312

Sweden. Kattegat. Göteborg. S of 'Marieholmsbroarna' bridges. Reported depth non existent.

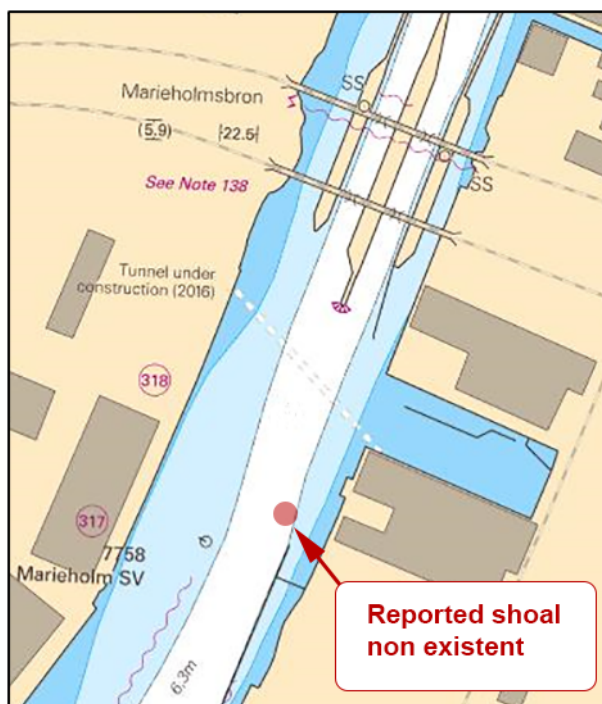
Expired notices: 2017:657/12240(T)

Bar sweeping has proved that the shoal does not exist.

Delete	reported depth 3,9 m	57-43,579N	011-59,541E
--------	----------------------	------------	-------------

Bsp Göta kanal 2011/s59





Non existent shoal

Sjöfartsverket, Norrköping. Publ. 1 juli 2017

### Inshore waters

\* 12262

Chart: 134

Sweden. Inshore waters. Säffle Canal. Glafs fjorden. Annual spring overhaul of buoyage completed.

Expired notices: 2017:652/12168(T)

The delayed annual spring overhaul of buoyage in Säffle Canal has now been completed.

Säffle Canal, mouth in Vänern	a)	59-05N	012-54E
Älgåfjorden, northern end	b)	59-39N	012-30E

Bsp Vänern 2014/s36, s37, s38, s39, s51

Sjöfartsverket, Säffle. Publ. 1 juli 2017

\* 12264 (T)

Chart: 121

Sweden. Inshore waters. Lake Vättern. Hjo. Dredging. Restrictions of fairway and harbour. Lights unlit.

#### Dredging work

Time: July 10 - July 28, 2017

Dredging works in progress in Hjo harbour. Booms are deployed around the dredging-area.

The harbour can only be reached through the southern entrance and the depth is reduced to 2,0 meters and the width to one third of the normal.

For more information call +46 503-350 85.

#### Unlit lights

Time: July 10 - August 11, 2017

Two lights at the entrance to Hjo, Hjo Norra Q WRG 8M and Hjo Södra FI(2) WRG 6s 8M are unlit due to cablework.

Hjo	58-18,2N	014-17,6E
-----	----------	-----------

Not shown in ENC.

Bsp Göta kanal 2011/s16, s60

Hjo kommun. Publ. 4 juli 2017