

Notices to Mariners, SWEDEN Swedish Maritime Administration



Areas in Swedish Notices to Mariners



SJÖFARTSVERKET

Editorial office
Swedish Maritime Administration
Ufs
601 78 NORRKÖPING
Sweden
tel: 0771 630 605
e-mail: ufs@sjofartsverket.se
Publisher:
Hydrographer Patrik Wiberg

ANNOUNCEMENTS

No Announcements in this booklet.

NOTICES

Northern Baltic

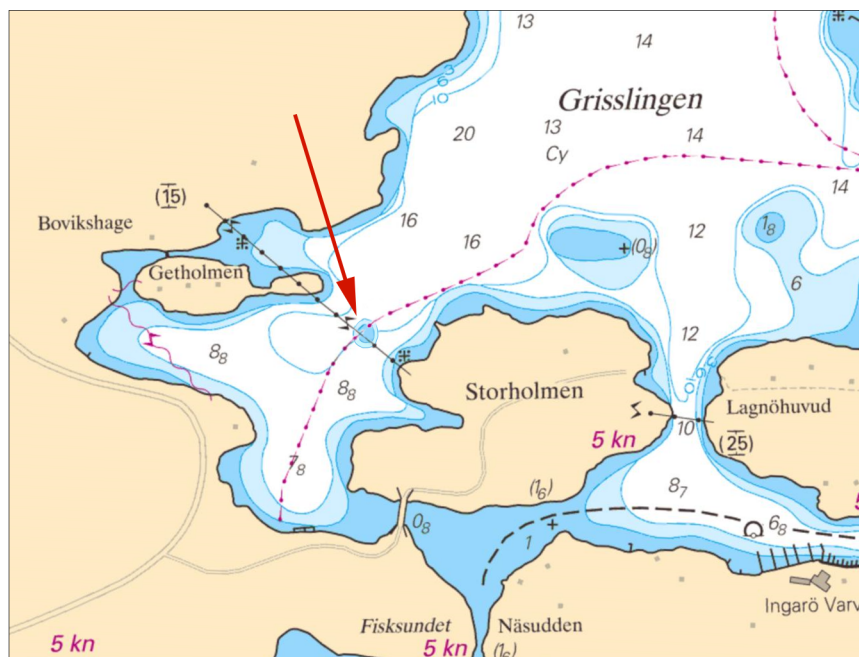
* 11907

Chart: 6142, 6145

Sweden. Northern Baltic. Stockholm. Grisslingen. Shoal.

Delete	11 m	a)	59-17,9N	018-25,6E
Insert	3- and 6 m depth contour according to chartlet	b)	59-17,877N	018-25,583E

Bsp Stockholm M 2016/s21



Shoal, Grisslingen

Sjöfartsverket, Norrköping. Publ. 6 april 2017

* 12001 (T)

Chart: 6212

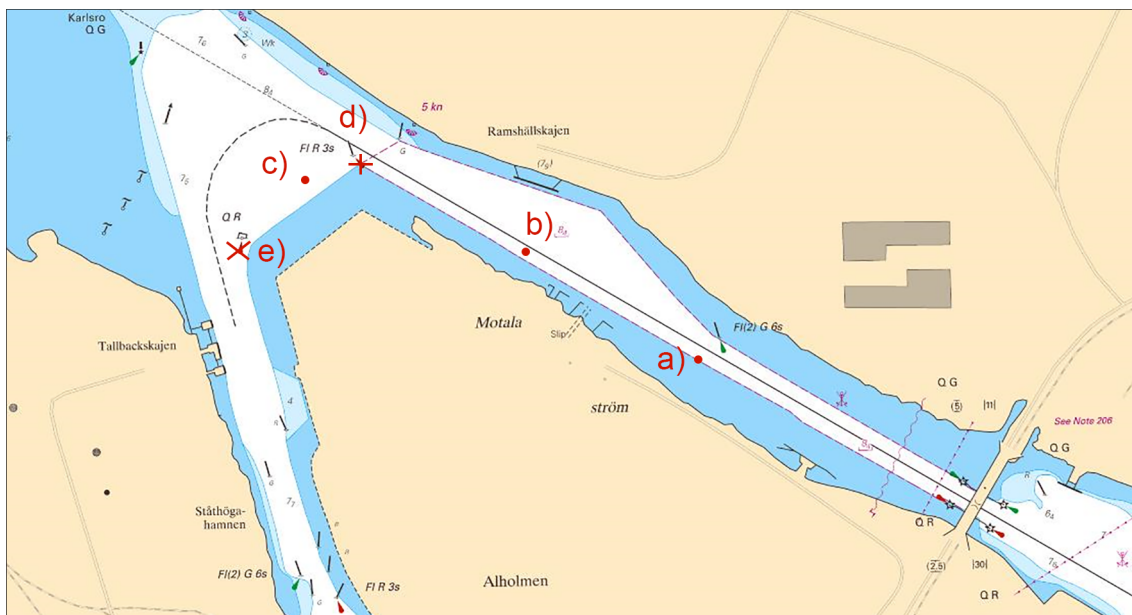
Sweden. Northern Baltic. Norrköping. Temporary and moved buoyage.

See: 2017:639/11904(T)

Some buoyage west of bridge Händelöbron are temporary amended due to less depth than charted.

Insert	port hand spar buoy	a)	58-36,692N	016-11,990E
Insert	port hand spar buoy	b)	58-36,773N	016-11,755E
Insert	port hand spar buoy	c)	58-36,826N	016-11,429E
Move	port hand light spar buoy, FI R 3s, to	d)	58-36,843N	016-11,511E
Move	port hand light buoy, QR, to	e)	58-36,777N	016-11,336E

Bsp Ostkusten 2015/s58



Temporary buoyage, Norrköping

Norrköpings Hamn AB. Publ. 1 april 2017

* 12003

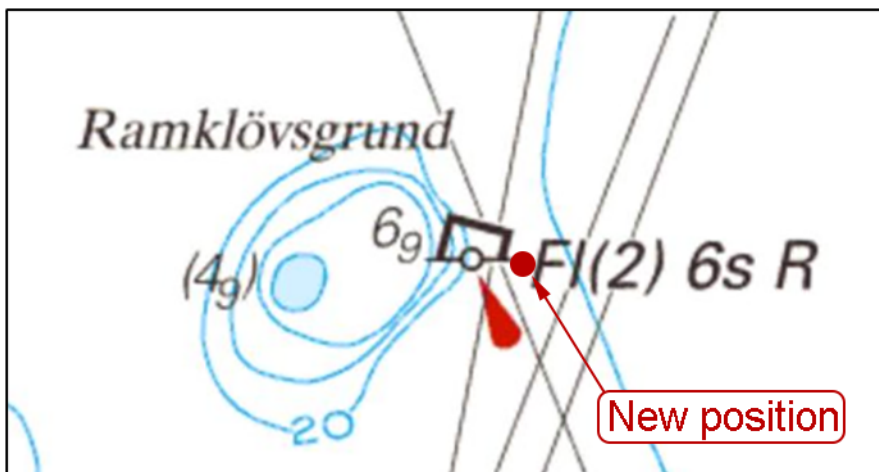
Chart: 616, 6171

Sweden. Northern Baltic. S entrance to Nynäshamn. Buoyage moved.

Expired notices: 2016:582/10918

Move	buoy 'Ramklövgrund' FI(2) R 6s about 50 m east to position	58-52,288N	018-00,242E
-------------	--	------------	-------------

Bsp Stockholm S 2016/s21, s35



Moved buoy. Nynäshamn.

Sjöfartsverket, Norrköping. Publ. 6 april 2017

* 12005 (T)

Chart: 616, 6162, 6163

Sweden. Northern Baltic. E of Utö. Gunnery exercises. April 18 - 25.

Position: Approx.	58-54N	018-20E	Utö Firing Danger Area
-------------------	--------	---------	------------------------

Gunnery exercises will be carried out within Utö firing range. The current extension of the closed area is given in the table.

Information during practice times VHF channel 16, call Utö skjutfält, or phone +46 8 501 570 45. Information about upcoming practice times, phone: +46 10 823 18 23, Muskö Sjöcentral.

April	Time	Range from shore
18 - 19	0900 - 1900	3.8 M
20	0900 - 2200	3.8 M
21	0900 - 1900	3.8 M
25	0900 - 1200	1.7 M

Not shown in ENC.

Bsp Stockholm S 2016/s17, s18, s37

Försvarsmakten, Utö. Publ. 5 april 2017

Central Baltic

* 11995

Chart: 62, 71

Sweden. Central Baltic. Gotland. Klintehamn. Buoyage.

See: 2016:610/11410

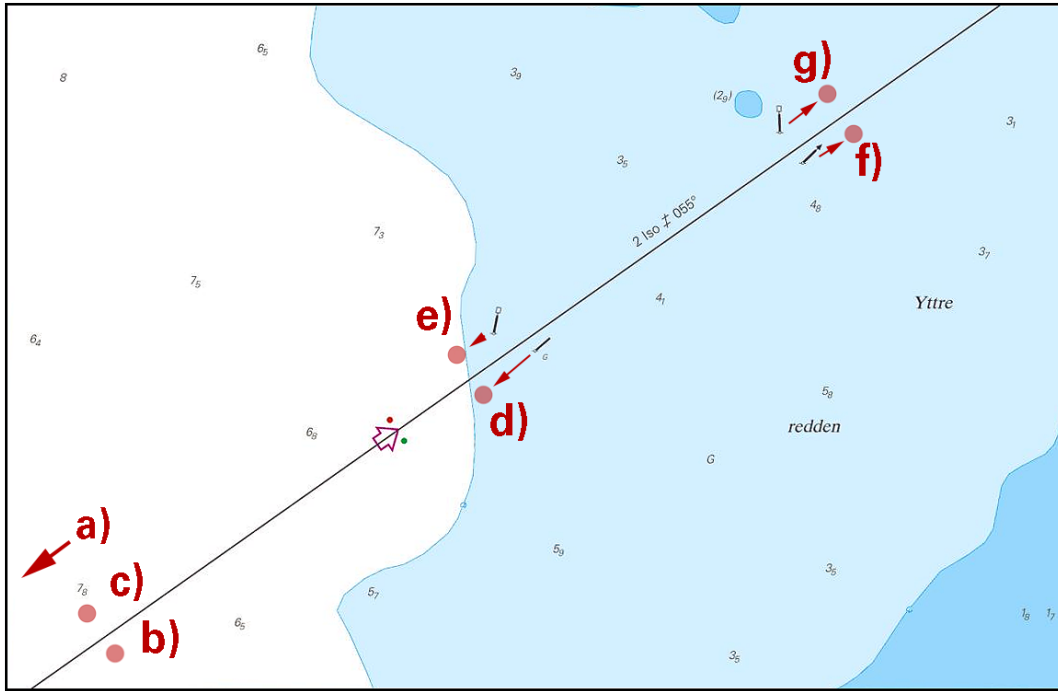
Buoyage in the fairway to Port of Klintehamn has changed following extensive dredging.

Changes to depths in the area will be promulgated separately in Swedish NtMs following an upcoming hydrographic survey.

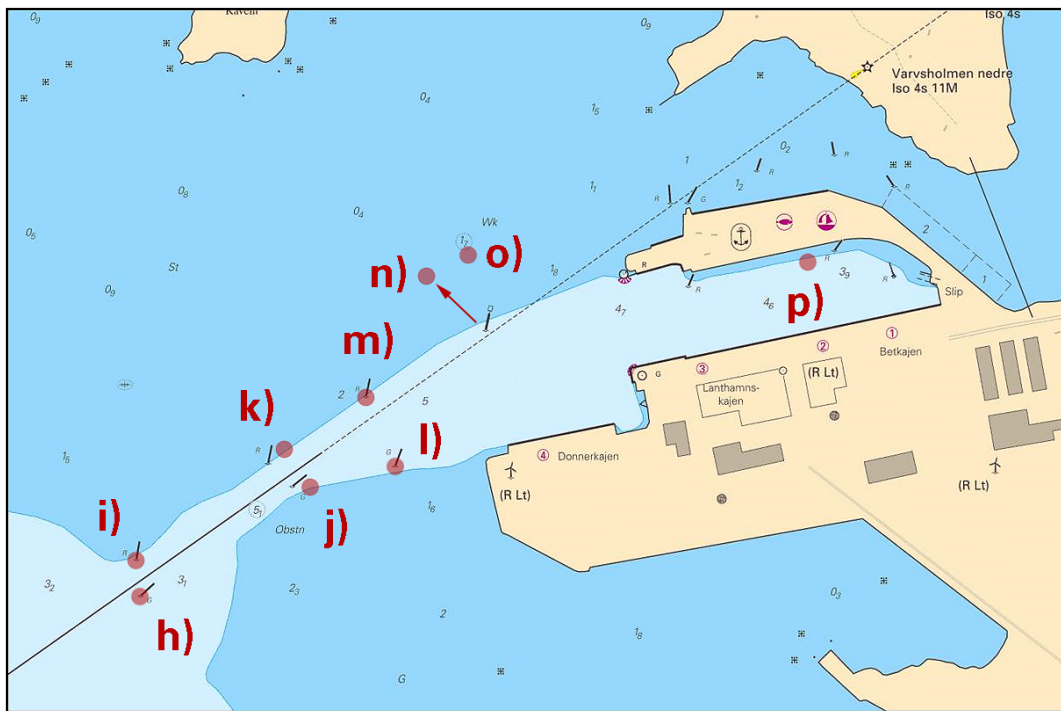
Delete	port-hand light buoy FI R 3s	a)	57-22,618N	018-09,121E	'Klintehamns angöring' - Charts 62 / 71
Insert	SB-hand light buoy FI G 2s with AIS	b)	57-22,720N	018-09,471E	MMSI no: 992652162
Insert	port-hand light buoy FI R 2s	c)	57-22,744N	018-09,440E	
Replace	SB-hand spar buoy with SB-hand light spar buoy FI G 2s and move to	d)	57-22,874N	018-09,880E	
Replace	port-hand spar buoy with SB-hand light spar buoy FI R 2s and move to	e)	57-22,898N	018-09,850E	
Replace	SB-hand spar buoy to SB-hand light spar buoy FI G 2s and move to	f)	57-23,029N	018-10,291E	
Replace	port-hand spar buoy to SB-hand light spar buoy FI R 2s and move to	g)	57-23,053N	018-10,261E	
Delete	SB-hand spar buoy	h)	57-23,115N	018-10,503E	
Delete	port-hand spar buoy	i)	57-23,138N	018-10,498E	
Replace	SB-hand spar buoy with SB-hand light spar buoy FI G 2s and move to	j)	57-23,183N	018-10,701E	
Replace	port-hand spar buoy with SB-hand light spar buoy FI R 2s and move to	k)	57-23,207N	018-10,671E	
Delete	starboard-hand spar buoy	l)	57-23,196N	018-10,799E	
Delete	port-hand spar buoy 100 m NW to	m)	57-23,239N	018-10,766E	
Move	port-hand spar buoy to	n)	57-23,315N	018-10,836E	
Insert	port-hand light spar buoy FI R 2s	o)	57-23,328N	018-10,885E	
Move	port-hand spar buoy to	p)	57-23,323N	018-11,279E	

Not shown in ENC.

Bsp Kalmarsund 2014/s07, Bsp Ostkusten 2015/s07, s64



Port of Klintehamn - approach



Entrance to port

Scandica, Sjöfartsverket. Publ. 1 april 2017

Southern Baltic

* 11994 (T)

Chart: 839

Sweden. Southern Baltic. E of Ystad. E of Kåseberga. Sand extraction.

Time: April 2017

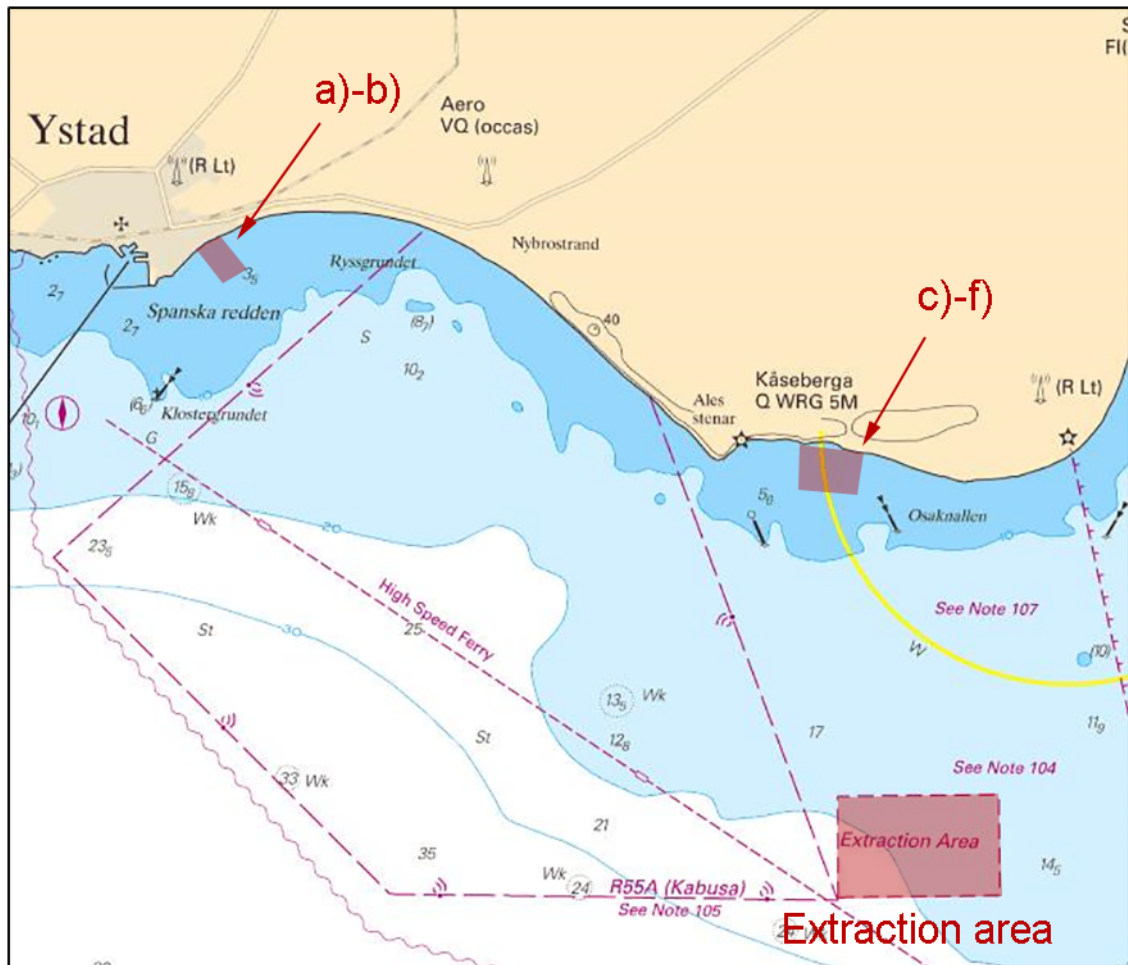
Sand extraction is in progress from marked area approx. 5,8 M SSW from the light Sandhammaren. The work is conducted by the 75 m long vessel Magni R/OWZ02.

The sand will be pumped ashore via 1200 m long pipes from two different locations, E of Ystad and E of Kåseberga. Special spar buoys are established along the pipes and furthest a special light buoy, FI Y 3s.

Extraction Area 5,8 M SSW from Sandhammaren		55-17,8N	014-08,0E	
Pipe E of Ystad, Sandskogen	a)	55-25,50N	013-51,05E	landing point
	b)	55-25,15N	013-51,50E	end of pipe, light buoy FI Y 3s
Pipes E of Kåseberga	c)	55-22,97N	014-06,57E	landing point
	d)	55-22,33N	014-06,54E	end of pipe, light buoy FI Y 3s
Pipe at Löderups strandbad	e)	55-22,93N	014-07,33E	landing point
	f)	55-22,28N	014-07,28E	end of pipe, light buoy FI Y 3s

Not shown in ENC

Bsp Sydkusten 2012/s27, s28



Sand extraction, Ystad.

Ystad kommun. Publ. 31 mars 2017

Kattegat

* 11809

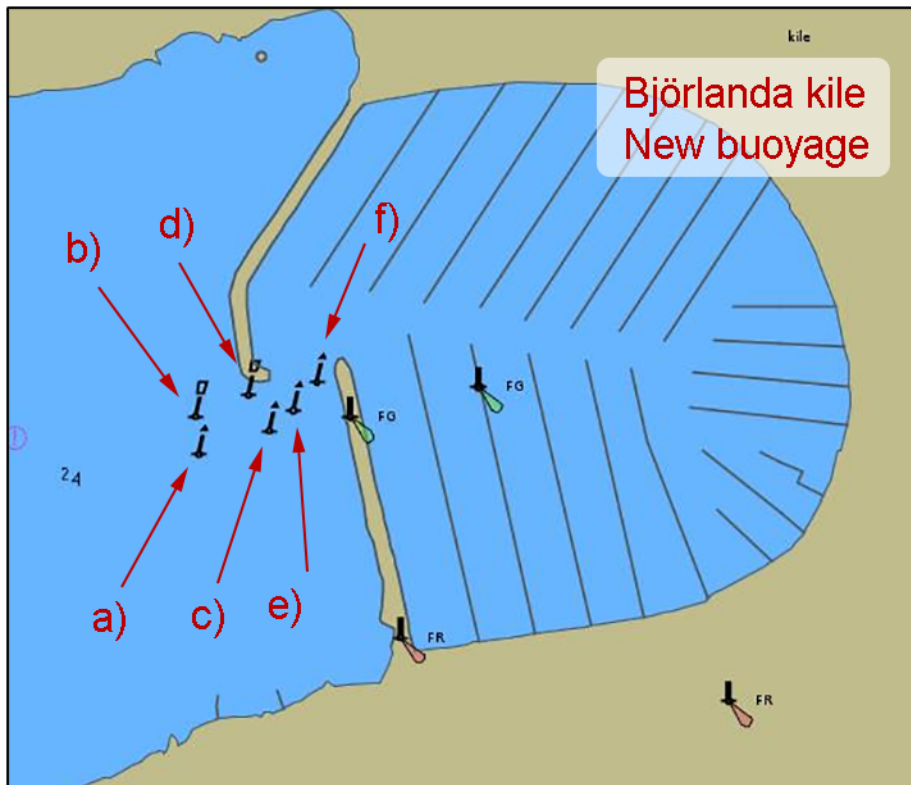
Chart: 931

Sweden. Kattegat. Gothenburg northern archipelago. Björlanda Kile. Buoyage.

6 spar buoys has been established outside the marina 'Björlanda kile' in Gothenburg northern archipelago. Due to the scale of the paperchart, the spar buoys will only be presented in electronic charts, ENC.

Insert	starboard hand spar buoy	a)	57-45,677N	011-47,834E
Insert	port hand spar buoy	b)	57-45,695N	011-47,830E
Insert	starboard hand spar buoy	c)	57-45,690N	011-47,898E
Insert	port hand spar buoy	d)	57-45,707N	011-47,877E
Insert	starboard hand spar buoy	e)	57-45,700N	011-47,919E
Insert	starboard hand spar buoy	f)	57-45,715N	011-47,939E

Bsp Västkusten S 2016/s17



Björlanda kile. New spar buoys in ENC.

Sjöfartsverket, Norrköping. Publ. 6 april 2017

* 11996

Chart: 92, 924

Sweden. Kattegat. Falkenberg. Amended light. New character. Flood light.

Expired notices: 2016:624/11673(P)

Amend	light 'Falkenberg'	56-52,929N	012-27,954E	New character Fl(2)WRG 6s
Insert	flood light on the northern breakwater	56-52,929N	012-27,954E	

Adm. LoL: C0722

Bsp Västkusten S 2016/s27, s66

Farledsteknik AB. Publ. 3 april 2017

Lake Vänern and Trollhätte kanal

* 11984

Chart: 1353

Sweden. Lake Vänern and Trollhätte kanal. Lilla Edet. Ströms sluss. Disabled vessel removed.

Expired notices: 2017:641/11937(T)

See: 2017:645/11998(T)

The disabled vessel 'Sternö' has been removed.

Please note that the depth in the area has been affected by the vessel. Se Ntm 11998(T).

Ströms sluss	58-08,31N	012-07,26E
--------------	-----------	------------

Bsp Göta kanal 2011/s48

Sjöfartsverket, Goteborg. Publ. 6 april 2017

* 11998 (T)

Chart: 1353

Sweden. Lake Vänern and Trollhätte kanal. Göta älv. Lilla Edet. Depth.

Time: Until further notice

Due to the incident with the vessel Sternö that ran aground just north of the lock 'Ströms sluss' in Lilla Edet, some of the vessels cargo has leaked and has made an area with less depth than presented in the charts. The cargo consisted of grain and is no hazard to the environment. The area is marked with yellow spar buoys with a cross top mark.

Shallow area	58-08,323N	012-07,288E
--------------	------------	-------------

Bsp Göta kanal 2011/s48



Shallow area, Lilla Edet

Sjöfartsverket, Norrköping. Publ. 31 mars 2017

* 12006

Chart: 135, 1353

Sweden. Lake Vänern and Trollhätte kanal. Vänersborgsviken. Light buoys re-established and lit.

Expired notices: 2016:629/11765(T)

Buoyage back in normal operation	58-24,8N	012-19,7E
----------------------------------	----------	-----------

Bsp Göta kanal 2011/s35, Bsp Vänern 2014/s35

Sjöfartsverket Publ. 5 april 2017