

Notices to Mariners, SWEDEN Swedish Maritime Administration



Areas in Swedish Notices to Mariners



SJÖFARTSVERKET

Editorial office
Swedish Maritime Administration
Ufs
601 78 NORRKÖPING
Sweden
tel: 0771 630 605
e-mail: ufs@sjofartsverket.se
Publisher:
Hydrographer Patrik Wiberg

ANNOUNCEMENTS

* 11937 (T)

Chart: 1353

Lilla Edet. Ströms sluss. Passage of disabled vessel.

Due to the works with the disabled vessel Sternö, southbound passage through the area is only permitted during daylight.

No restrictions apply for northbound vessels. Vessels should proceed through the area with caution.

Vessels involved in the salvage operation are exempted from this restriction.

Disabled vessel	58-08,31N	012-07,26E
-----------------	-----------	------------

Not shown in ENC.

Bsp Göta kanal 2011/s48

Sjöfartsverket, Trollhättan. Publ. 7 mars 2017

NOTICES

Bay of Bothnia

11931

Chart: 42

Finland. Bay of Bothnia. Jakobstad. Light Kallan. Racon.

Insert	racon (T)	63-45,09N	022-31,37E	Light Kallan, Q(2) WRG 6s
--------	-----------	-----------	------------	---------------------------

Adm. LoL vol. C 4214

Finnish NtM 2017:01/11. Publ. 9 mars 2017

* 11935 (T)

Chart: 41, 421

Sweden. Bay of Bothnia. E of Byske. Tåme. Gunnery exercises March 14 - 23, 2017.

Position: Approx.	64-55N	021-30E	Tåme Firing practice area
-------------------	--------	---------	---------------------------

Gunnery exercises will be carried out at Tåme Firing range during times listed below. During these times the charted danger area "R 58" is closed to navigation within stated distance from shore.

During firing a red balloon is shown from the observation towers. Further information on VHF channel 16, call Tåme skjutfält, or phone +46 921 348405 alt. +46 921 349100.

March	Time	Range from shore
14 - 16	0800 - 1930	9.5 M
18 - 19	0800 - 1930	9.5 M
20 - 23	0800 - 2030	9.5 M

Not shown in ENC.

Bsp Bottenviken 2014/s06, s37

Försvarsmakten, Tåme skjutfält. Publ. 7 mars 2017

Sea of Åland and Archipelago Sea

11884

Chart:

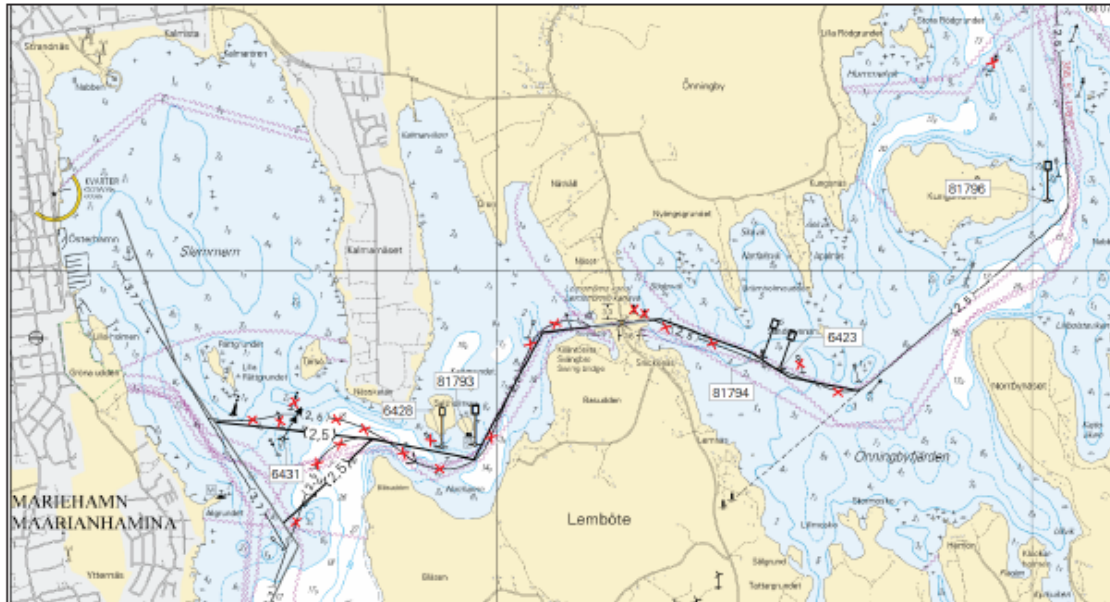
Sweden. Sea of Åland and Archipelago Sea. SE of Mariehamn. Rödhamn - Österhamn. Österhamn - Önningbyfjärden. Amended maximum authorized draught. Smaller changes to fairway.

Smaller amendments to fairways between Rödhamn - Österhamn and between Österhamn - Önningbyfjärden, see chartlets.

Amended maximum authorized draught according to a) - d).

Amend	maximum authorized draught from 3,7 m to 3,2 m between a) - b)	a)	59-59,40N	020-06,15E
		b)	59-59,35N	020-04,88E
Amend	maximum authorized draught from 3,7 m to 3,2 m between c) - d)	c)	59-59,38N	020-05,79E
		d)	59-58,95N	020-05,14E

Bsp Stockholm N 2016/s54, s55, s57, s59



Chartlet from Finnish NtM, Österhamn - Önningbyfjärden.



Chartlet from Finnish NtM, Rödhamn - Österhamn.

Finnish NtM 2016:30/312 & 313. Finnish NtM 2016:31/318. Publ. 7 mars 2017

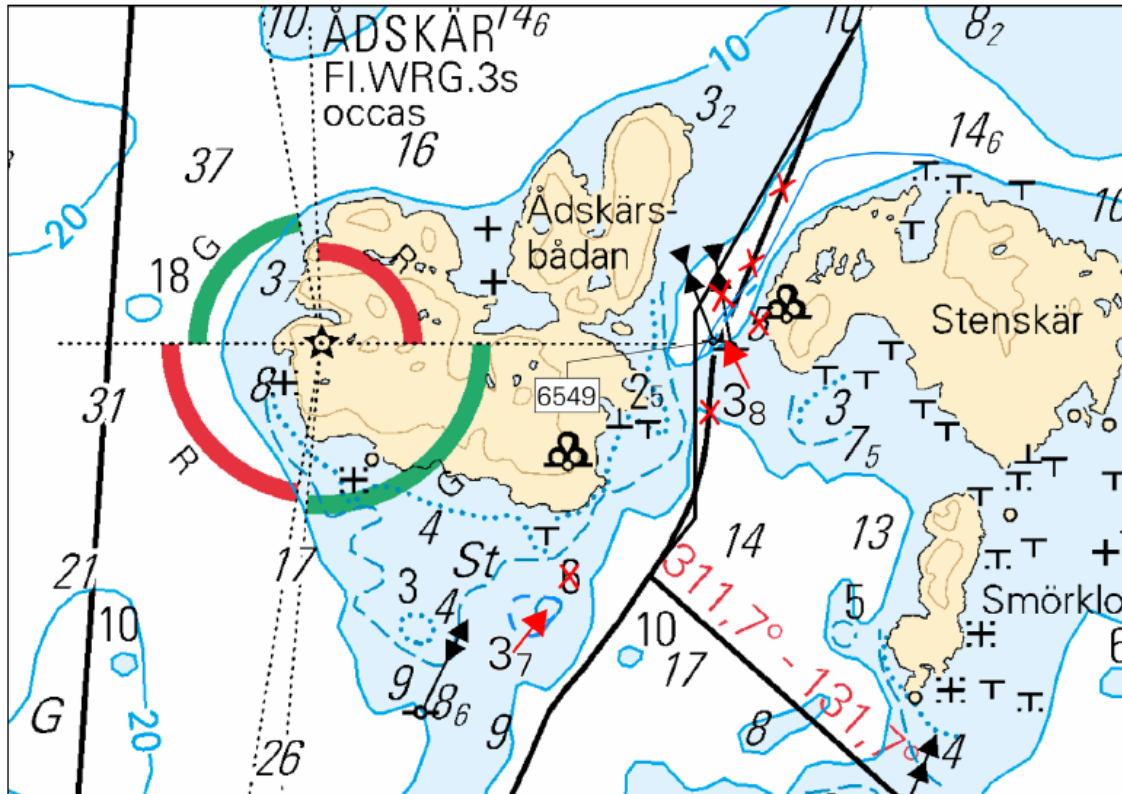
11929

Chart:

Finland. Sea of Åland and Archipelago Sea. NW of Åland. Eckerö. Ådskär. Depth. Amended fairway.

Replace	6 m with 3,7 m	a)	60-20,749N	019-31,720E
Delete	5 m	b)	60-21,081N	019-32,226E
Insert	3,8 m	c)	60-21,059N	019-32,152E
Amend	fairway and east cardinal spar buoy according to chartlet	d)	60-21,05N	019-32,17E

Bsp Stockholm N 2016/s49



Chartlet from Finnish NtM

Finnish NtM 2016:34/352 & 2017:02/17. Publ. 9 mars 2017

Lake Mälaren and Södertälje kanal

* 11932 (T)

Chart: 113

Sweden. Lake Mälaren and Södertälje kanal. Port of Västerås. Västra hamnen. Diving operation.

Time: Until May 31, 2017

Diving operations are in progress along quays 39 through 51 as indicated on chartlet.

Västra hamnen, Port of Västerås	59-35,4N	016-31,4E
---------------------------------	----------	-----------

Not shown in ENC.

Bsp Mälaren - Hjälaren 2016/s20, s21



Västra hamnen, Port of Västerås

Peab Marin AB. Publ. 4 mars 2017

Central Baltic

* 11943 (T)

Chart: 71

Sweden. Central Baltic. Gotland. Burgsvik. Lights in line out of service.

Lights in line at Burgsvik are temporary unlit.

Burgsvik, 2 Iso 4s	57-02,93N	018-17,21E
--------------------	-----------	------------

Not shown in ENC.

Adm. LoL vol. C 7214, 7214:1

Bsp Kalmarsund 2014/s07

Region Gotland. Publ. 9 mars 2017

The Sound

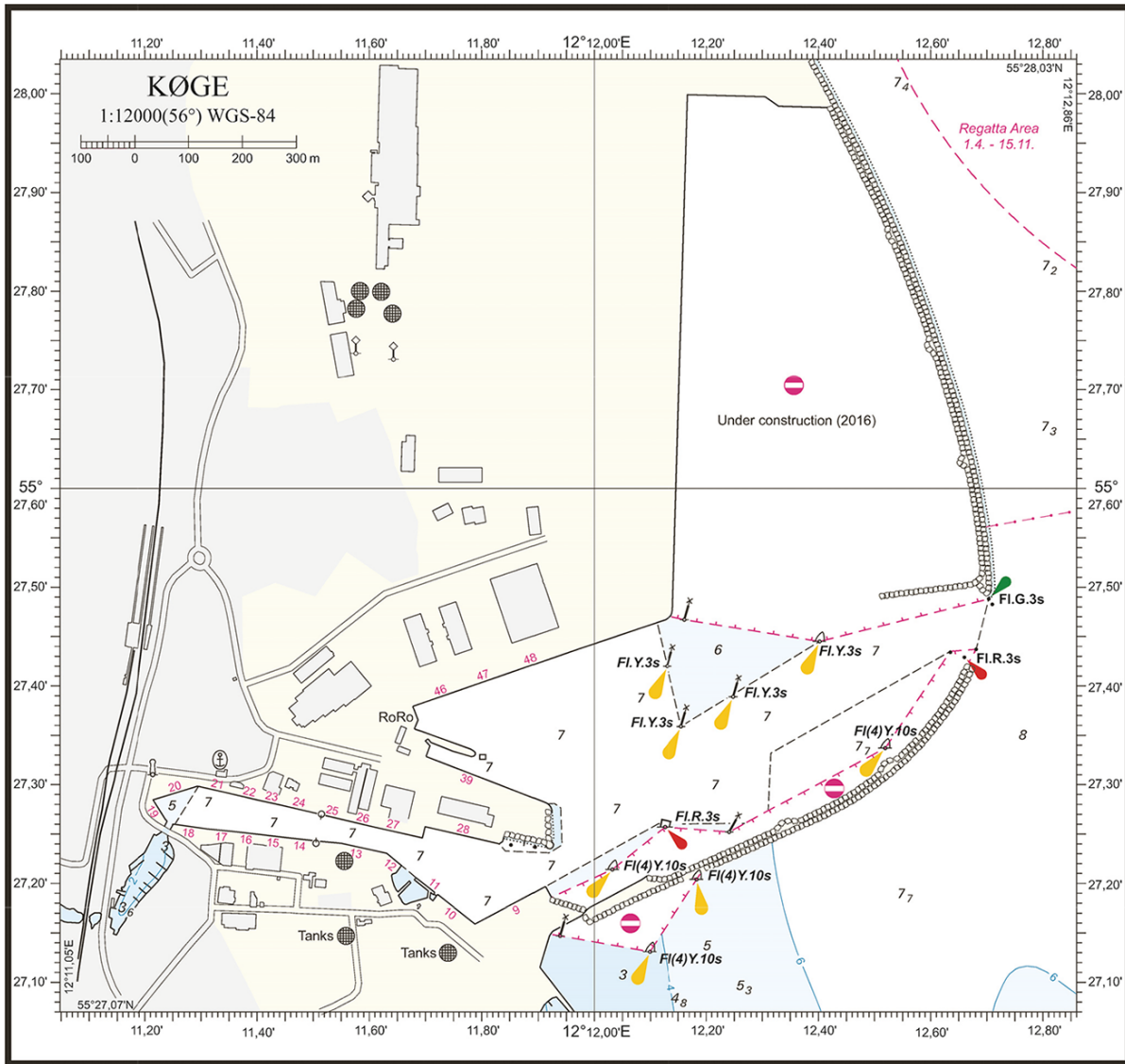
11939

Chart:

Denmark. The Sound. Port of Køge. Rebuilding work and buoyage.

	Port of Køge	55-27,6N	012-12,0E	
Amend	inset according to chartlet			Note: Chartlet not true to scale

Bsp Sydkysten 2012/s18, s22, s53



Port of Køge (not true to scale)

Danish NtM 2017:07/210. Publ. 9 mars 2017

* 11940

Chart: 8141, 921

Denmark. The Sound. Port of Copenhagen. Svælget. Sundby Hage. Buoyage.

Delete	top mark on starboard-hand buoy	a)	55-40,208N	012-39,549E
Delete	top mark on starboard-hand buoy	b)	55-39,615N	012-40,057E

Bsp Sydkysten 2012/s15

Danish NtM 2017:09/241. Publ. 9 mars 2017

Kattegat

* 11941 (T)

Chart: 1352, 9312

Sweden. Kattegat. Göteborg. Marieholm tunnel. Slow passage Apr - Nov 2017.

Time: April 12 - November 15, 2017

The first section of the new Marieholm tunnel is finished and will be moored in the area just south of the Marieholm bridges. Vessels are requested to pass with slow speed to minimize damage to the section. The tunnel section will be marked with fixed yellow light.

The Marieholm tunnel	57-43,64N	011-59,55E
----------------------	-----------	------------

Not shown in ENC.

Bsp Göta kanal 2011/s59

Sjöfartsverket, Göteborg. Publ. 9 mars 2017

* 11944 (T)

Chart: 9312, 9313

Sweden. Kattegat. Göteborg. Arendal. Works.

Time: March 2017

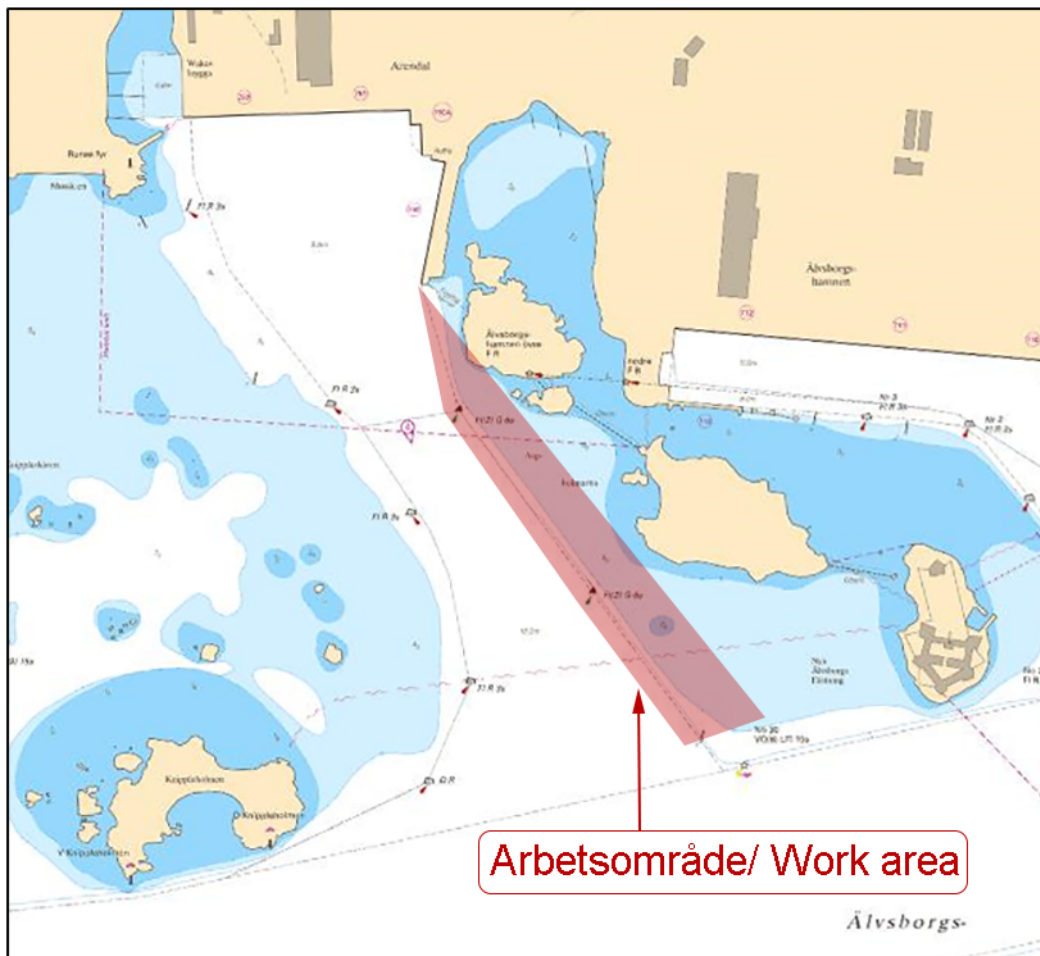
Geological drill operations are being conducted from a barge in the area around port of Arendal in Göteborg. The barge is assisted by the tug boat 'Frog Cygnus'. Vessels bound for Arendal are requested to make contact with 'Frog Cygnus' prior to passage.

Frog Cygnus is stand by on VHF ch 13 or tel: +46 (0)739-200047.

Work area	57-41,21N	011-49,35E
-----------	-----------	------------

Not shown in ENC.

Bsp Västkusten S 2016/s17, s19, s46, s47, s54, s56



Work area for Frog Cygnus. Port of Arendal, Göteborg.

Frog Marine Service. Publ. 9 mars 2017

Lake Vänern and Trollhätte kanal

* 11933

Chart: 931

Sweden. Lake Vänern and Trollhätte kanal. Nordre Älv. Cable ferry crossing at Kornhall. Fairway reopened.

Expired notices: 2016:630/11770(T)

The rope which was previously fitted across Nordre Älv north of the ferry landing point at Kornhall, has been removed. The fairway is reopened.

Kornhall	57-49,13N	011-52,77E
----------	-----------	------------

Bsp Västkusten S 2016/s62

Trafikverket Färjerederiet. Publ. 4 mars 2017

*** 11942**

Chart: 134

Sweden. Lake Vänern and Trollhätte kanal. Åmål. Djuphamnen. Light spar buoy. New character.

Amend	port hand light spar buoy to character FI R 3s	59-03,012N	012-43,044E
--------------	--	------------	-------------

Bsp Vänern 2014/s16, s49

Sjöfartsverket, Norrköping. Publ. 9 mars 2017