

Notices to Mariners, SWEDEN Swedish Maritime Administration



Areas in Swedish Notices to Mariners



SJÖFARTSVERKET

Editorial office
Swedish Maritime Administration
Ufs
601 78 NORRKÖPING
Sweden
tel: 0771 630 605
e-mail: ufs@sjofartsverket.se
Publisher:
Hydrographer Patrik Wiberg

ANNOUNCEMENTS

No Announcements in this booklet.

NOTICES

Bay of Bothnia

* 11847 (T)

Chart: 41, 421

Sweden. Bay of Bothnia. E of Byske. Tåme. Gunnery exercises January 23 - February 9, 2017.

Position: Approx.	64-55N	021-30E	Tåme Firing practice area
-------------------	--------	---------	---------------------------

Gunnery exercises will be carried out at Tåme Firing range during times listed below. During these times the charted danger area "R 58" is closed to navigation within stated distance from shore.

During firing a red balloon is shown from the observation towers. Further information on VHF channel 16, call Tåme skjutfält, or phone +46 921 348405 alt. +46 921 349100.

Day	Time	Range from shore
January 23 - 25	0800 - 1930	5.4 M
January 26	0800 - 1400	5,4 M
January 30 - February 4	0800 - 1930	9,4 M
February 5	0800 - 1630	9,4 M
February 6 - 8	0800 - 1930	9,4 M
February 9	0800 - 1400	9,4 M

Not shown in ENC.

Bsp Bottenviken 2014/s06, s37

Försvarsmakten, Tåme skjutfält. Publ. 21 januari 2017

Southern Baltic

* 11849 (T)

Chart: 7, 74, 8, 83, 839

Sweden. Southern Baltic. E of Ystad. Kabusa. Firing exercises. February 2017.

Position: Approx.	55-23N	013-57E	Firing restricted area R55A KABUSA
-------------------	--------	---------	------------------------------------

Restricted area R55A will be closed for vessels during stated times.

For further information call "Kabusa skjutfält" on VHF Ch 16 or call +46 411-55 06 52/+46 10 829 2805.

February	Hours	Range from shore
1	0900 - 1600	2,2 M
2	0900 - 1700	2,2 M
14	0900 - 1600	2,7 M
15	0900 - 1600	2,7 M
16	0900 - 2200	2,7 M
28	0900 - 1600	1,9 M

Not shown in ENC.

Bsp Sydkusten 2012/s06, s27, s28

Södra Skånska Regementet, Södra Sandby. Publ. 24 januari 2017

* 11850 (T)

Chart: 7, 74, 742, 743, 8, 83

Sweden. Southern Baltic. S of Åhus. Ravlunda. Firing exercises. February 2017.

Position: Ap.	55-46N	014-20E	Firing restriction area R34 RAVLUNDA
---------------	--------	---------	--------------------------------------

Restriction area R34 will be closed for vessels during stated times.

During practice orange quick light, Q Or, is shown from shore.
For further information, call +46 44 35 10 32.

February	Hours	Range
1	0900 - 1800	6,8 M
6	0900 - 1700	3,8 M
7	0900 - 1700	3,8 M
8	0900 - 1800	3,8 M

Not shown in ENC.

Bsp Hanöbukten 2014/s06, s07, s24, s25, s26, s27, s28, s29, s30, s31, s32, s33, Bsp Sydkusten 2012/s06, s07, s29
Södra Skånska Regementet, Södra Sandby. Publ. 24 januari 2017

*** 11851 (T)**

Chart: 74, 742, 743

Sweden. Southern Baltic. Approaches to Åhus. Rinkaby. Firing exercises. February 2017.

Position: Ap.	55-56N	014-22E	Firing restriction area R38A RINKABY
---------------	--------	---------	--------------------------------------

The restriction area R38A will be closed for vessels during times given in the table. The exercises will be interrupted to allow passage of merchant vessels.

During practice orange quick light, Q Or, is shown from shore.
For further information call +46 44 24 25 02 (only during firings).

February	Hours	Range
19	0900 - 1600	1,9 M
28	0900 - 1700	2,4 M

Not shown in ENC.

Bsp Hanöbukten 2014/s24, s25, s26

Södra Skånska Regementet, Södra Sandby. Publ. 24 januari 2017

The Sound

*** 11845**

Chart: 922, 9221

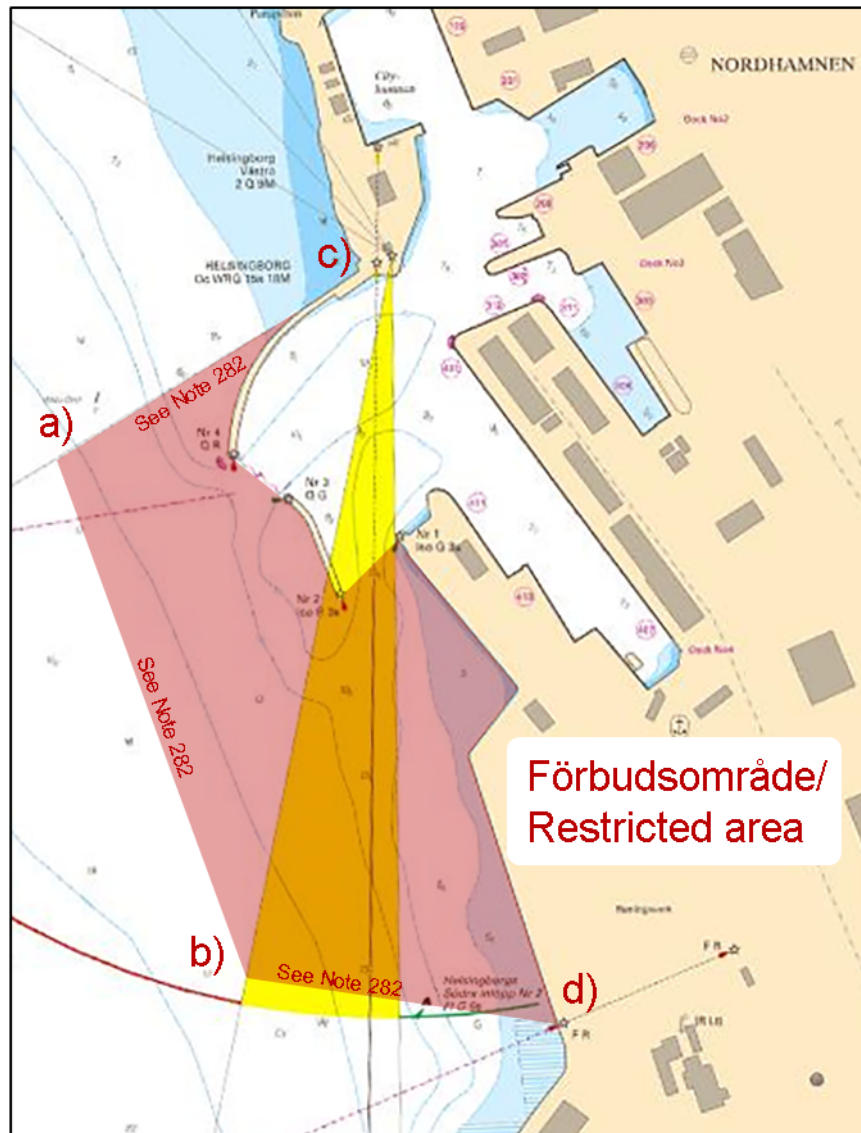
Sweden. The Sound. Helsingborg. Nordhamnen. Restricted area. New Note.

See: 2016:630/11773

A restricted area has been established outside the port 'Nordhamnen' in Helsingborg. Only vessels with permission may enter the port and restricted area.

Insert	restricted area between a) - d) and text 'See Note 282' according to chartlet	a)	56-02,46N	012-40,85E
		b)	56-02,09N	012-41,08E
		c)	56-02,60N	012-41,27E
		d)	56-02,06N	012-41,48E
Insert	Note 282			

Bsp Sydkusten 2012/s11, s12, s31, s32, s33



Restriction area

Note 282**RESTRICTED AREA NORDHAMNEN HELSINGBORG**

Entry allowed only for vessels in- or outbound to 'Nordhamnen'. Entry prohibited for pleasure craft.

FÖRBUDSOMRÅDE NORDHAMNEN HELSINGBORG

Tillträde endast för fartyg som ska passera in till eller ut från Nordhamnen. Tillträde för fritidsbåtar förbjuden.

Note 282

Transportstyrelsen. Publ. 24 januari 2017

Skagerrak

* 11846 (T)

Chart: 933

Sweden. Skagerrak. N of Orust. Koljö fjord. Dunning of spoil.

Time: February 2017.

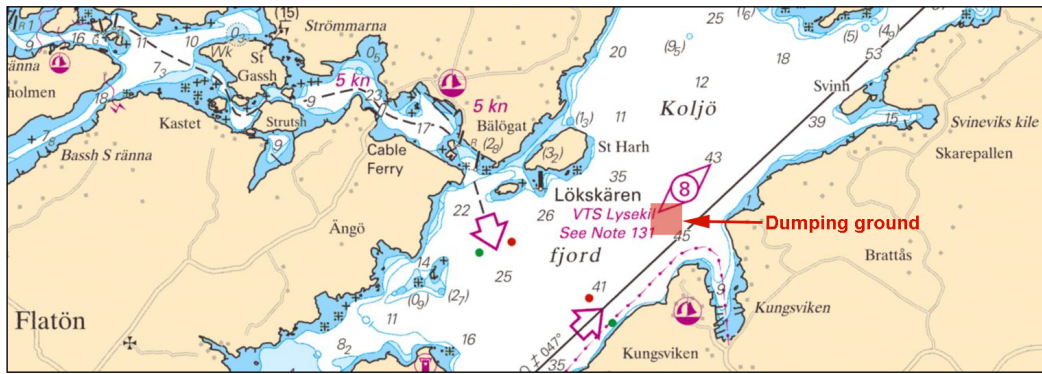
Dumping of spoil will take place during February within the area indicated on the chartlet.

The spoil will be dumped from a hopper barge which is operated from the tugboat JOEL/SIOC (tel +46 705 42 88 52).

Centre of the approx. 200 x 200 m large dumping area	58-13,9N	011-34,6E
--	----------	-----------

Not shown in ENC.

Bsp Västkusten N 2016/s05, s20



Dumping ground at Koljö fjord

Hamn & Sjö Väst AB. Publ. 24 januari 2017

Lake Vänern and Trollhätte kanal

* 11848 (T)

Chart: 1352

Sweden. Lake Vänern and Trollhätte kanal. Göta älv. Bohus. Closed area.

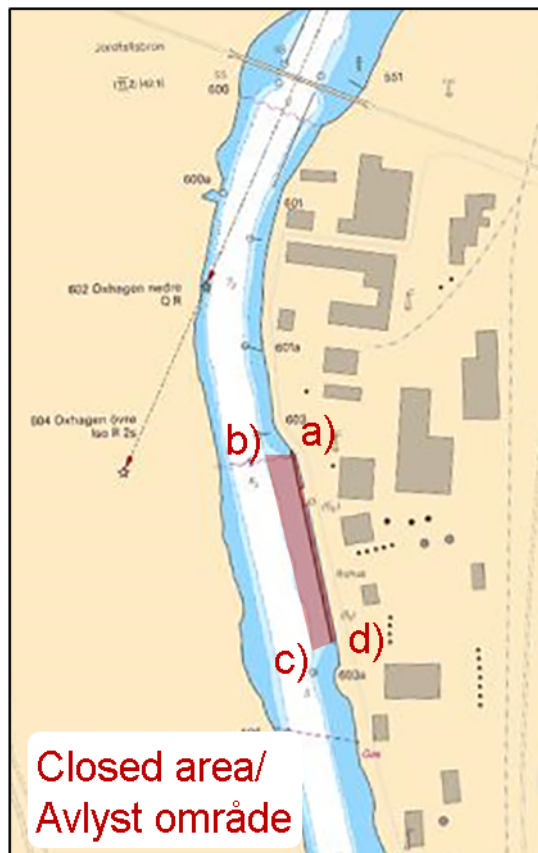
Time: January 17 - September 15, 2017

The area is closed for all vessel traffic during stated time.

Vessels participating in the works are exempted.

Closed area	a)	57-51,078N	012-00,527E
	b)	57-51,078N	012-00,493E
	c)	57-50,950N	012-00,548E
	d)	57-50,953N	012-00,572E

Bsp Göta kanal 2011/s55, s56



Closed area. Göta älv

Länsstyrelsen Västra Götalands län. Publ. 26 januari 2017

* 11853 (T)

Chart: 133, 135

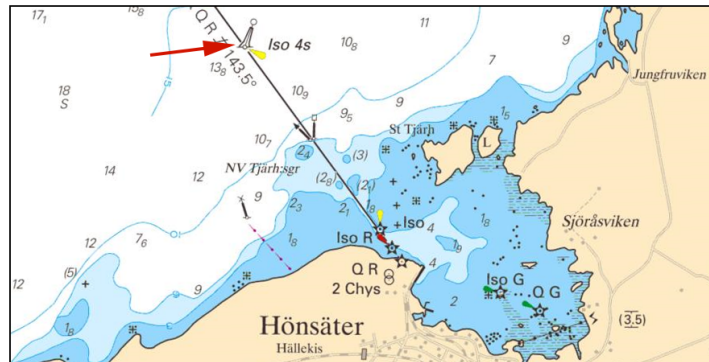
Sweden. Lake Vänern and Trollhätte kanal. Vänern. Hönsäter approaches. Light buoy withdrawn for the winter.

Time: Until spring 2017

Hönsäter safe water light buoy withdrawn for the winter	58-39,07N	013-25,07E
---	-----------	------------

Not shown in ENC.

Bsp Göta kanal 2011/s27, Bsp Vänern 2014/s29



Hönsäter safe water light buoy

Sjöfartsverket, Trollhättan. Publ. 24 januari 2017